

Cabinet

Minutes of a meeting held at County Hall,
Colliton Park, Dorchester on 22 October 2014.

Present:

Spencer Flower (Chairman)
Robert Gould (Vice-Chairman)
Toni Coombs, Peter Finney, Colin Jamieson, Jill Haynes and Rebecca Knox.

John Wilson, Chairman of the County Council, attended under Standing Order 54(1).

Members attending:


Steve Butler, County Council Member for Cranborne Chase
Mike Byatt, County Council Member for Weymouth Town
Hilary Cox, County Council Member for Winterborne
Lesley Dedman, County Council Member for Mudeford and Highcliffe
Janet Dover, County Council Member for Colehill and Stapehill
Trevor Jones, one of the County Council members for Dorchester
Paul Kimber, County Council Member for Portland Tophill
William Trite, County Council Member for Swanage
Peter Wharf, County Council Member for Egdon Heath

Officers Attending: Debbie Ward (Chief Executive), Richard Bates (Chief Financial Officer), Catherine Driscoll (Director for Adult and Community Services), Mike Harries (Director for Environment and the Economy), Jonathan Mair (Monitoring Officer), Rachel Partridge (Assistant Director of Public Health), Sara Tough (Director for Children's Services), Fiona King (Public Relations Officer) and Lee Gallagher (Democratic Services Manager).

For certain items, as appropriate

Sam Fox-Adams (Head of Policy, Partnerships and Communications), Cyril Loveridge (Capital Programme Manager), Jim McManus (Chief Accountant), Helen Owens (Consultation and Research Manager), Richard Pascoe (Head of ICT and Customer Services), Phil Rook (Group Finance Manager – Adult and Community Services) and Gill Smith (Senior Planning Officer).

(Notes:(1) In accordance with Rule 16(b) of the Overview and Scrutiny Procedure Rules the decisions set out in these minutes will come into force and may then be implemented on the expiry of five working days after the publication date. Publication Date: **28 October 2014**.

(2) The symbol () denotes that the item considered was a Key Decision and was included in the Forward Plan.

(3) These minutes have been prepared by officers as a record of the meeting and of any decisions reached. They are to be considered and confirmed at the next meeting of the Cabinet to be held on **19 November 2014**.

(4) **RECOMMENDED** in this type denotes that a decision is required by County Council.)

Apologies for Absence

378. Apologies for absence were received from David Phillips (Director of Public Health). Rachel Partridge (Assistant Director of Public Health) attended the meeting on behalf of David Phillips.

Code of Conduct

379. There were no declarations by members of any disclosable pecuniary interests under the Code of Conduct.

Minutes

380. The minutes of the meeting held on 1 October 2014 were confirmed and signed.

Matters Arising**Minute 359 – Emergency Local Assistance Scheme from 2015**

381. The Chief Financial Officer reported that in relation to the Emergency Local Assistance Scheme four options had been produced as part of a Government consultation on future funding arrangements. It was noted that options 1-3 of the consultation focused on recycling existing funding and the fourth option asked for suggestions of how the Council could fund the scheme itself. The Cabinet felt that the decision made at the last meeting was the best solution at present.

Public Participation**Public Speaking**

382.1 There were no public questions received at the meeting in accordance with Standing Order 21(1).

382.2 There were no public statements received at the meeting in accordance with Standing Order 21(2).

Petitions

382.3 There were no petitions received in accordance with the County Council's petition scheme at this meeting.

Draft Cabinet Forward Plan

383.1 The Cabinet considered the Draft Forward Plan, which identified key decisions to be taken by the Cabinet and items planned to be considered in a private part of the meeting on or following the Cabinet meeting on 19 November 2014. The draft plan had been published on 21 October 2014.

383.2 The Chief Executive clarified that outstanding or deferred items would be included in the Forward Plan and detail the appropriate director as the responsible officer for the item in advance of final details being confirmed.

Noted**Panels and Boards**

384.1 The minutes of the Dorset Waste Partnership Joint Committee meeting held on 25 September 2014 were submitted for endorsement.

384.2 The Cabinet Member for Corporate Resources informed the Cabinet of the budgetary issues facing the Joint Committee with a projected significant overspend of 800k. This was of concern to all partners, but particularly to the County Council as the largest partner of the Joint Committee. The next meeting on 28 October 2014 would consider the budget in detail with a budget workshop being held on the same day.

384.3 It was further explained that a consultation on the future of household recycling centres across Dorset would be undertaken with the results being reported back to

the Joint Committee in January 2015. Concerns were expressed by members in relation to the governance arrangements and the ability to affect the future direction of the partnership.

Resolved

385. That the minutes be received.

Forward Together Update - Ask Dorset

386.1 The Cabinet considered a joint report by the Cabinet Members for Corporate Resources and Education and Communications on the Forward Together Programme, and the outcome of the Ask Dorset consultation.

386.2 The Cabinet Member for Corporate Resources explained the extent of the Ask Dorset consultation exercise as a very successful project for the Council which promoted participation by members of the public in forming services for the future. He highlighted that participation of 12,000 had far exceeded expectations through roadshows, Your Dorset, Libraries and the Citizens' Panel which gained views from the public and particular groups such as young people, elderly and businesses. It was also noted that a lot of members took part in Ask Dorset and were very positive about the experience. Tributes were paid to the officers for their hard work and the involvement of members.

386.3 The Cabinet considered the results of the consultation which had been distilled from 20 key issues into priorities which would influence the Corporate Plan and the Council's budget. One key area was the willingness of the public to pay a modest increase in council tax.

386.4 It was noted that the consultation would be fed back to the public to show that the Council was listening to the views expressed and that consultation with the public across Dorset would continue in future years as this was not a one off exercise. Developments for the future included social media and consultation through schools and colleges to engage more with young people. Other elements of consultation included a scheduled meeting of the Leader of the Council with Weymouth and Portland Borough Council to pass on the positive messages of the consultation.

386.5 A concern was raised by the Leader of the Liberal Democrat Group that rural buses and transport would not be reviewed until 2016 by the Environment Overview Committee although this was a priority area identified by the Consultation. The Chairman clarified that the existing contract was due to finish in 2016, but this did not prevent options being developed. However, it was also highlighted that the Council was being faced with significant decisions regarding service delivery across the whole Council as it was not possible to look at one area in isolation and judgements had to be made in a measured way. The holistic transport review and the community transport review by the Audit and Scrutiny Committee were cited as two examples of developments currently underway.

Resolved

387.1 That the results of the Ask Dorset engagement campaign be used to inform the priorities of the next Corporate Plan 2015-18.

387.2. That feedback of the results of Ask Dorset to the public be approved.

Reasons for Decisions

388.1 That the Corporate Plan 2015-18 accurately reflected the priorities identified by the Ask Dorset campaign.

388.2 To feedback the results of Ask Dorset in order to build a positive reputation in accordance with the Council's adopted Engagement Framework.

Medium Term Financial Plan (MTFP) Update

389.1 The Cabinet considered a report by the Cabinet Member for Corporate Resources on the national and local issues impacting on the County Council's finances that would need to be taken into account when developing the next three-year financial plan.

389.2 The Cabinet Member for Corporate Resources provided a detailed overview of the report into the Council's Medium Term Financial Plan and noted that a budget briefing was scheduled for members later in the day. He explained particular issues which included council tax, savings targets over three years of the plan, work to address structural deficits, pressures on directorate budgets, the Transformation Fund, health and social care changes, the Dorset Waste Partnership projected overspend of £800k, employee pay offer, government grants, impact of academies, severe weather funding, business rates retention and the new homes bonus plan. It was noted that a further report would be considered by the Cabinet in December 2014.

389.3 Clarification was provided in relation to underspending regarding Public Health which was ring-fenced and would be reinvested at the end of the financial year. The underspend was due to structural review and efficiencies. It was also reported that the transfer of nurses for 0-5 year old provision across Bournemouth, Dorset and Poole was a joint commissioning partnership which would be reported to members in due course.

389.4 In relation to transformation funding, the Cabinet recognised that funding would need to be made available to support innovation and further transformation, which included match funded projects to lever greater rewards as long as they aligned with corporate priorities.

389.5 A concern was expressed in relation to the future pressures in education regarding changing relationships with schools becoming academies, funding formulas and de-delegation of powers to purchase services from the Council.

Resolved

390.1 That the forecast overspend for 2014/15 be noted.

390.2 That the progress being made against savings targets for Forward Together projects be noted.

390.3 That the Forward Together Board's recommendation about dealing with the structural deficit over a three-year period - by establishing separate workstreams to develop programmes to fit within the budget available and provide £5.3m of balances to cover this base budget shortfall over the MTFP period be supported.

390.4 That the likely levels of funding available to the Authority over the next three years, as set out in the MTFP summary be noted.

Reason for Decisions

391. To enable work to continue on refining and managing the County Council's budget plan for 2014/15 and the three years of the MTFP period, and beyond.

Local Government Boundary Commission for England – Stage 1 Consultation Response

392.1 The Cabinet considered a report by the Leader of the Council on the Local Government Boundary Commission for England review of electoral divisions across Dorset County Council.

392.2 The Chairman explained that the Executive Advisory Panel on Periodic Electoral Review had considered the review and had undertaken consultation meetings with County Council Members from each district and borough area. It was highlighted that the

model required electoral equality within 10% tolerance of the average electorate and it was important to provide justification for any decisions which varied from the model.

392.3. The Cabinet heard from the County Council Member from Winterborne in relation to the electoral division serving the Winterborne area in North Dorset. She suggested that a minor change be made to incorporate Woolland, Ibberton and Hinton into the division serving Blackmore Vale as they naturally looked towards Okeford Fitzpaine and the rest of the Blackmore Vale. It was agreed that as the change retained electoral equality and was minor in nature due to geography, the change should be made to the consultation response report which would be considered by the County Council on 13 November 2014.

392.4. The Leader of the Liberal Democrat Group, as a local member for Colehill and Stapehill requested that the consideration of East Dorset divisions be deferred until the outcome of the community governance review currently being undertaken by East Dorset District Council was known. This was due to end by 12 December 2014 and contained similar considerations of changes to electoral wards for the District Council. The Chairman expressed sympathy with the views expressed, but clarified that the reviews undertaken by different authorities were considered to be entirely separate and the outcome of one would not impact on the other. The Cabinet agreed that as the review required a response by 1 December 2014 it was appropriate to recommend the proposals to the County Council.

392.5 In relation to the Swanage electoral division, the local member supported the proposal to recommend that the division be retained with no changes which would vary the electorate by 11.4% from the average figure, as the only exception to the mathematical model applied to all divisions. He highlighted that the second bullet point of paragraph 5.12 of the Leader's report be amended to provide a clearer justification.

392.6 Further amendments were suggested to clarify that Verwood and Three Legged Cross was a single Town Council, and that reference to 'Pilston' in the West Dorset area should be amended to 'Pilsdon'.

RECOMMENDED

393. That subject to changes outlined in the minute above, as incorporated into the Annexure to these minutes, that the County Council be recommended to adopt the recommendations contained within the consultation response report for submission by 1 December 2014.

Reason for Recommendation

394. To align with the Aims of the Corporate Plan in relation to Enabling Economic Growth and Health, Wellbeing and Safeguarding.

Interim Report of the Executive Advisory Panel on the Care Act and Future Social Care Policy

395.1 The Cabinet considered a report by the Cabinet Member for Adult Social Care on the work and role of the Executive Advisory Panel on the Care Act and Future Social Care Policy.

395.2 The Cabinet Member for Adult Social Care introduced the report and highlighted the changes required to the terms of reference of the Panel to reflect changes emerging from the Care Act, and to also address the short break service. The Panel would also continue to focus on the existing roles contained within the terms of reference.

395.3 A proposal to refer possible changes of policy or consideration by the Adult and Community Services Overview Committee in advance of being considered by the

Cabinet for decision as the parent body of the Panel was noted. The Monitoring Officer pointed out that as an executive advisory panel it reported directly to the Cabinet.

Resolved

396.1 That the revised terms of reference, at Appendix 1 of the Cabinet Member's report, which reflect that the charging guidance to be issued by the Department of Health under the Care Act as a replacement of the previous 'Fairer Contributions' guidance, be approved.

396.2 That the Carers' Short Break Service be regarded as a service to the cared-for person.

396.3 That the latest detailed policy proposals as developed by the Executive Advisory Panel and described in Appendix 2 of the report be supported.

Reason for Decisions

397. To help secure a sustainable approach to the County Council's corporate area of focus on 'health, wellbeing and safeguarding'.

Formation of a Local Authority Trading Company (LATC) for Adult Provider Services

398.1 The Cabinet considered a joint report by the Cabinet Members for Adult Social Care and Corporate Resources on the formation of a Local Authority Trading Company (LATC) for Adult Provider Services to support people to live independently for as long as possible and to promote health and wellbeing.

398.2 The Cabinet Member for Adult Social Care introduced the report as one of the biggest and most important reforms that the Council would undergo during 2014/15 in relation to the delivery of adult provider services. A detailed overview of the arrangements for an LATC was provided for the Cabinet which would see the transfer of £25m into a new organisation to be able to make savings of £6.8m over the life of the five year business plan and ability to make a profit (limited to 20%) to reinvest into Council services. It was also explained that the governance arrangements would be an important part of the transformation and would be proposed in due course. It was also noted that there was an ambition to include Bournemouth Borough Council and the Borough of Poole in the LATC.

398.3 The report had been considered by the Adult and Community Services Overview Committee and the Audit and Scrutiny Committee which had both supported the proposals, although some comments were received about the need for adequate input from service users and staff in the governance arrangements, and the need for the LATC to be more radical in terms of service delivery. The Cabinet Member confirmed that staff and users would be catered for appropriately within the governance arrangements, and then clarified that it was necessary to set up the organisation on a solid foundation and establish business growth before any radical changes could be progressed. It was also noted that terms and conditions for staff would remain, and any new staff would be employed on the existing terms and conditions.

398.4 It was noted that the Cabinet would be the responsible decision maker for the LATC and it would not be referred to the County Council. The pace of decision making from the last decision in December 2013 was seen as necessary due to the current financial climate, which required a decision to be made thoroughly with pace.

398.5 Members recognised that a significant amount of consultation had already been undertaken, with staff and service users, but formal consultation with TUPE transfer of staff would take place and wider engagement with service users would also be undertaken.

398.6 The Cabinet fully supported the aims, direction and innovation of the formation of an LATC for adult provider services across Dorset, and the potential for a joint arrangement with Bournemouth and Poole Councils.

Resolved

399.1 That the establishment in principle of a Local Authority Trading Company (LATC) and support services company in line with the proposed scope contained within the Business Plan be approved.

399.2 That the Chief Executive and Director for Adult and Community Services be granted delegated authority after consultation with the Chief Financial Officer (S151 Officer) and Monitoring Officer, Cabinet Member for Adult Social Care and Cabinet Member for Corporate Resources and the Executive Advisory Panel on Pathways to Independence to agree the detailed implementation plans for the LATC including the proposed structure of the company and its relationship with the County Council.

399.3 That a further report on a pan-Dorset LATC with Bournemouth Borough Council and the Borough of Poole be presented by the Cabinet Member for Adult Social Care to the Cabinet once the high level business case is developed.

Reason for Decisions

400. The decision reflected the agreed vision and principles of:

- Pathways to Independence
- Forward Together objectives (greater independence, smarter services, empowered people)
- Medium Term Financial Plan and Budget 2014/15 to 2016/17

Integrated Digital Care Fund Bid

401.1 The Cabinet considered a joint report by the Cabinet Members for Adult Social Care and Corporate Resources in relation to a bid to establish an Integrated Digital Care Fund.

401.2 The Cabinet Member for Adult Social Care introduced the report and highlighted the merits of a portal in order to share information in relation to service users across agencies as a tool which would save lives. It was noted that the investment would provide for the innovative project to be taken forward as a match funded bid.

401.3 The Cabinet agreed that the use of shared information through partnership was essential and would save lives by use of a single point of contact for service users and fully supported the proposal.

Resolved

402.1 That, subject to a successful bid, the County Council act as the host agency for a Dorset wide health and social care partnership for the management and monitoring of an integrated digital care fund.

402.2 That delegated authority be granted for the acceptance of the bid award to the Chief Executive after consultation with the Leader of the Council and the Chief Financial Officer, subject to satisfactory legal advice on any proposed agreement with the Department of Health.

402.3 That match funding of up to £400K towards delivering an integrated health and social care record in accordance with the bid submission be provided.

402.4 That a revenue commitment of up to £150k per annum to support the new integrated ICT system be provided.

402.5 That the development of a scaled down business case and implementation plan be supported, for further consideration by Cabinet if the integrated digital care fund bid was not successful.

Reason for Decisions

403. To support the Better Together Programme objective for improving integrated health and social care delivery through improved information sharing between agencies.

Dorset Wide Gypsy, Traveller and Travelling Showpeople Site Allocations Joint Development Plan Document – Additional Sites Consultation 2014

404.1 The Cabinet considered a report by the Cabinet Member for Environment and the Economy in relation to an 'Additional Sites' consultation by West Dorset District Council in relation to a Gypsy, Traveller and Travelling Showpeople Site Allocations Development Plan Document.

404.2 The Cabinet Member for Environment and the Economy explained that the Council's response to the consultation required a focus on eight further sites being brought forward for consideration, and it was only necessary to comment on the strategic merits of the sites.

404.3 The views of the County Council Member for Chickerell and Chesil Bank were received by the Chairman in relation to the proposed site at Wyke. However, it was noted that particular views from members in relation to particular sites should be made to the relevant district or borough council as the appropriate planning authority.

Resolved

405. That the "recommended responses" set out in the Cabinet member's report as the response to West Dorset District Council acting on behalf of the Dorset wide Local Planning Authorities be agreed.

Reason for Decision

406. To ensure that the interests of the County Council as set out in the Corporate Plan (in particular the aim to enable economic growth) were reflected in the Dorset-Wide Gypsy, Traveller and Travelling Showpeople Site Allocations Joint Development Plan Document.

Dorset's Growth Deal: Transport Scheme Funding

407. The Cabinet considered a report by the Cabinet Member for Environment and the Economy in relation to transport scheme funding through Dorset's Growth Deal, of which the majority would be directed towards improvement of road access to Bournemouth Airport and the Port of Poole. However, £35.7m had been allocated to schemes in Dorset and the Strategic Economic Plan further identified £7.95m of local funding comprising of Section 106, Community Infrastructure Levy (CIL), and County Council corporate funding.

Resolved

408.1 That implementation of the identified transport schemes through the Growth Deal be approved.

408.2 That a further contribution of £400k towards scheme implementation from corporate capital funds, plus a further £2.025m in forward funding of s106 and CIL obligations that will be returned to the authority over time, be approved.

Reason for Decisions

409. Improving delivery of the transport infrastructure of Dorset to help support Corporate Aim 4 – safeguard and enhance Dorset's unique environment and support its local economy.

Proposal for a Pan-Dorset Youth Offending Team

410.1 The Cabinet considered a report by the Director for Children's Services in relation to a proposal to establish a Pan-Dorset Youth Offending Team.

410.2. The Cabinet Member for Children's Safeguarding and Families introduced the report, which had been considered by the Children's Services Overview Committee on 14 October 2014. It was noted that the Youth Offending Team had been operating the model outlined in the report for the past year and was recognised as a Priority Youth Offending Team due to the success of the arrangements in terms of service delivery and financial savings. The Cabinet noted that the change took place as an opportunity through service change across Dorset and Poole and that this had developed into a pan-Dorset arrangement. A significant improvement to service delivery had occurred across Bournemouth and Poole as a result of the arrangement.

410.3. The Cabinet recognised the work as a testament to the recently retired Youth Offending Team Manager and paid tribute to his efforts to introduce the excellent service.

Resolved

411.1 That a single Youth Offending Service to cover Bournemouth, Dorset and Poole, as a partnership between the 3 local authorities and the other statutory partners be approved.

411.2 That arrangements for detailed planning towards implementation be noted.

411.3 That progress will be reported to future meetings of this Children's Services Overview Committee.

Reason for Decisions

412. The Cabinet had responsibility for the success of the Youth Offending Team in preventing any re-offending by children and young people. The proposals provided the best option for a high quality effective service in the future.

The Proposed Merger between Dorset Fire and Rescue Authority and Wiltshire and Swindon Fire and Rescue Authority

413.1 The Cabinet considered a report by the Cabinet Member for Corporate Resources on the public consultation by the Dorset Fire Authority to increase awareness of the budgetary constraints and options for a merger between Dorset Fire and Rescue Authority and Wiltshire and Swindon Fire and Rescue Authority.

413.2 The Cabinet Member for Corporate Resources outlined the strategic direction of travel of the merger in order to protect front end service delivery. The Cabinet Member for Children's Safeguarding and Families, as the Chairman of the Fire Authority, highlighted that some service delivery changes would take place, but the merger would provide huge opportunities that would benefit Dorset. It was noted that a very informative presentation had been made to members by the Chairman of the Authority and the Chief Fire Officer on 9 October 2014.

413.3 It was acknowledged that there had been some overlap and confusion in relation to two issues covered in the local press in relation to the announcement of a Government transformation bid alongside a Fire Brigade Union report which were entirely separate matters.

Resolved

414.1 That the Dorset Fire Authority's scenario 3 to merge with Wiltshire & Swindon Fire Authority to create a single combined authority and increase collaboration between Bournemouth Borough Council, Dorset County Council, the Borough of Poole, Wiltshire Council and Swindon Borough Council be supported.

414.2 That the commencement of detailed planning in relation to the combination be approved.

Reason for Decisions

415. To support the Dorset Fire Authority in continuing to provide a rapid response to emergency call-outs across Dorset whilst simultaneously meeting budgetary constraints and to expand its community safety initiatives for the benefit of Dorset's communities.

Recommendation from the Adult and Community Services Overview Committee

416. The Cabinet considered the following recommendation from the meeting of the Adult and Community Services Committee held on 6 October 2014:

Recommendation 120 – Extra Care Housing

417. The Cabinet Member for Adult Social Care highlighted the need to impress on district and borough councils that housing of this nature should be planned for as more would be needed in communities in the future.

Resolved

418. That the Extra Care Housing Strategy be approved.

Reason for Decision

419. The Strategy supported the County Council's focus on health, wellbeing and safeguarding.

Recommendations from the Environment Overview Committee

420. The Cabinet considered the following recommendations from the meeting of the Environment Overview Committee held on 9 October 2014:

Recommendation 141 – Proposed Revision of Scheduled Highway Gully Cleaning

Resolved

421. That a revised gully cleaning and emptying frequency be introduced with immediate effect, with gullies on the Priority and Community salting routes being emptied once per annum, with the remainder of the gullies being emptied on an ad-hoc basis.

Reason for Recommendation

422. To operate within a restricted revenue budget by moving towards a risk/needs based approach to gully cleansing.

Recommendation 144 – Community Signs Policy

Resolved

423. That the new Community signs policy, as attached at Appendix 1 to the Director's report, be approved.

Reason for Decision

424. To assist local communities to sign and direct highway users to local destinations more efficiently.

Recommendation 147 – Advisory Disabled Parking Bays Policy

Resolved

425. That the new advisory Disabled Parking Bays Policy, as contained in Appendix 1 to the Director's report, be approved.

Reason for Decision

426. In order to provide assistance to disabled persons living in a vehicle owning household, who were in receipt of one of the stated mobility allowances to be able to park in close proximity to their property.

Recommendation 150 – Environmental Performance and Greenhouse Emissions 2014Resolved

427. That the opportunities noted in section 5 of the Director's report to be pursued by officers be agreed.

Reason for Decision

428. The opportunities supported the County Council's key objective of Enabling Economic Growth, set out in Corporate Plan 2014-15, by supporting an energy efficient, low carbon economy, tackling global environmental change and ensuring good management of our environmental and historic assets.

Recommendation 162 – Proposed Draft Policy on Highway Vegetation ManagementResolved

429. That the approach set out in section 4 of the Director's report, including developing a detailed business case, be agreed.

Reasons for Decision

430.1 To support corporate plan aims on enabling economic growth, specifically the commitments to manage and maintain highway infrastructure, and to ensure good management of our environmental and heritage assets.

430.2 To respond to community concerns about the County Council's arrangements for highway vegetation management.

Audit and Scrutiny Committee – Call to Account – Universal Free School Meals Contract

431.1 The Cabinet considered an urgent report by the Chairman of the Audit and Scrutiny Committee which reported on the findings and recommendations of a call to account into the universal free school meals contract following the start of the 2014/15 school year.

431.2 The Chairman of the Audit and Scrutiny Committee introduced the report and clarified that the report had been compiled at short notice, and as such he confirmed that the reported percentage of schools affected by the issues in relation to free school meals was inaccurate, but there were many. The position of the contractor and the Council regarding responsibility for the problems was accepted and it was explained that the purpose of the report was to identify weaknesses and identify an action plan to address lessons learned.

431.3 Concerns were expressed by Cabinet members regarding some of the subjective content of the report and it was suggested that the findings be received and the request for an action plan be agreed.

431.4 In relation to the scrutiny of the contractual arrangements, it was noted that the procurement processes were complex and the new contract arrangements were in process before the Government directive to provide universal free school meals. The change then increased the number of meals from 4k to 11k per day. A single pan Dorset contract was maintained in order to provide a consistent level of service to all schools who bought into the contract. The fire at the contractors' premises led to a number of issues which contributed to and compounded the service difficulties.

431.5 The Cabinet felt that it would not be appropriate for Cabinet members to be accountable for contract, procurement or legal matters as these were expert areas of service delivery, and the professional teams within the Council were the experts.

431.6 Members recognised that it was important for the Audit and Scrutiny Committee to provide scrutiny of the arrangements and welcomed the challenge, along with the need to plan how to learn lessons from the issues identified. It was therefore agreed that a comprehensive action plan be used to address issues in the report and to take account of the findings, as a constructive way to move forward. The action plan would then be reported back to the Audit and Scrutiny Committee within three months.

431.7 The Cabinet Member for Education and Communications also provided a detailed account of compensation packages being offered by the contractor for parents and schools, and letters had been sent out to all concerned.

Resolved

432.1 That a comprehensive action plan be used to address issues and to take account of the findings in the Audit and Scrutiny Committee report of the call to account of the universal free school meals contract.

432.2 That the action plan be reported back to the Audit and Scrutiny Committee within three months.

Reason for Decisions

433. To enable the identification of areas of improvement that should be made to future process and consider further actions in relation to future commissioning and contracting processes.

Questions from Members of the Council

434. No questions were asked by members under Standing Order 20.

Exempt Business

Exclusion of the Public

Resolved

435. That in accordance with Section 100 A (4) of the Local Government Act 1972 to exclude the public from the meeting in relation to the business specified in minutes 436-438 because it was likely that if members of the public were present, there would be disclosure to them of exempt information as defined in paragraph 3 of Part 1 of Schedule 12A to the Act and the public interest in withholding the information outweighed the public interest in disclosing the information to the public.

Damers First School, Poundbury, Dorchester – Position Statement (Paragraph 3)

436.1 The Cabinet considered a joint exempt report by the Cabinet Members for Education and Communication and Environment and the Economy on the position regarding the development of design proposals for Damers First School at Poundbury.

436.2 The Cabinet Member for Education and Communications explained that the project had been on-going for a number of years and consisted of options to relocate the Damers First School as a result of an increase in basic need for pupil places. However, discussions between the Council, the Duchy of Cornwall and the Dorchester Community Church had stalled in relation to a three party shared use arrangement regarding a combined facility for community use.

436.3 It was noted that negotiations were progressing and evolving, and as such it was necessary to be in a position to proceed as soon as possible. One of the local members

for Dorchester (Trevor Jones) indicated that he supported the proposal within the Cabinet Members' report.

Resolved

437.1 That the decision by the Modernising Schools Project Board to abort a three party shared use arrangement between the County Council, the Duchy of Cornwall and Dorchester Community Church to build a combined school hall, a 300 seat community hall and a church be endorsed.

437.2 That the progress in relation to a planning application which has been submitted and is due to be determined on 23 October 2014 - in the knowledge that some amendment may be subsequently required, be noted.

437.3 That the continued negotiations with the Duchy regarding the form and function of a building adjoining the school hall, whether that is an extension or a stand alone building be noted and sanctioned.

Reason for Decisions

438. To ensure that the new Damers First School was not delayed any longer than necessary.

Meeting Duration: 10.00am – 12.35pm



Dorset County Council

Stage 1 Consultation Response

Submission to the Local Government Boundary Commission for England – November 2014

Contents

	Page
1. Introduction	3
2. Dorset: Context	4
3. Executive Advisory Panel Arrangements	4
4. Electoral Forecast Methodology	5
5. District and Borough County Council Members Consultation	6
Christchurch – 25 September 2014	6
East Dorset – 25 September 2014	7
North Dorset – 11 September 2014	9
Purbeck – 7 October 2014	10
West Dorset – 7 October 2014	12
Weymouth and Portland – 7 October 2014	13
7. Conclusions	13
8. Recommendation	14
 <u>Appendices</u>	
Appendix 1: Map – Christchurch	15
Appendix 2: Map – East Dorset	17
Appendix 3: Map – North Dorset	20
Appendix 4: Map – Purbeck	21
Appendix 5: Map – West Dorset	22
Appendix 6: Map – Weymouth and Portland	23
Appendix 7: Map – Dorset	24
Appendix 8: Participation List	25
Appendix 9: Electoral forecast methodology	26
Appendix 10: Electoral forecast details based on the proposed electoral divisions	28

Introduction

- 1.1 The Local Government Boundary Commission for England reported to the County Council on 24 April 2014 in relation to the forthcoming periodic review of electoral boundaries across Dorset. The Cabinet then considered the timetable and review arrangements for the review at its meeting held on 7 May 2014.
- 1.2 Electoral reviews look at whether the boundaries of wards or divisions within a local authority need to be altered. Reviews can be conducted to either ensure fairer representation at local government elections after any significant changes in the distribution of electors, or at the request of a local authority for other reasons.
- 1.3 An electoral review examines and proposes new electoral arrangements for the whole local authority. These are:
- The total number of councillors to be elected to the council: council size.
 - The names, number and boundaries of divisions.
 - The number of councillors to be elected from each division.
- 1.4 The review is likely to have implications for the whole local authority not just areas with high levels of electoral inequality.
- 1.5 Dorset County Council meets the Commission's criteria for electoral inequality with 33% of divisions having a variance of greater than +/-10%. The Commission will also seek to deliver electoral equality for voters in local elections.
- 1.6 In the preliminary phase of the review the County Council considered a report on the future council size at its meeting on 24 July 2014 that the Council should increase from 45 to 46 members from 2017. The submission was considered by the Boundary Commission and now forms part of a consultation which started on 23 September 2014 and will end on 1 December 2014 where the Commission indicated that it was minded to recommend an increase in size in line with the County Council's view.
- 1.7 The public consultation is open for all stakeholders and the public to provide views and evidence about local areas across Dorset to enable the Boundary Commission to decide on a new pattern of electoral divisions for the County Council. This is the first stage of consultation to be undertaken by the Commission; the second phase will consult on the boundaries to be proposed by the commission as final recommendations before being submitted to Parliament.
- 1.8 An Executive Advisory Panel on Periodic Electoral Review was established by the Cabinet on 7 May 2014 to oversee and co-ordinate the review with the following membership to provide a geographical spread across the whole County:
- | | |
|-----------------------------------------|----------------------------|
| Spencer Flower - East Dorset (Chairman) | David Jones - Christchurch |
| Mike Byatt - Weymouth | Daryl Turner - West Dorset |
| Janet Dover - East Dorset | David Walsh - North Dorset |
| Fred Drane - Purbeck | |
- 1.9 The Panel has held seven meetings to formulate the attached report on the future boundaries of electoral divisions in Dorset. The Panel met on 10 September 2014 to discuss the methodology and considerations to take into account when determining the future boundaries, then six meetings were held with the members in each of the district and borough areas in order to provide an opportunity for all members to get involved and to consider the matters affecting divisions, with a view to formulating

recommendations to be considered by the Council on 13 November 2014, and then submission as part of the consultation by the deadline of 1 December 2014.

- 1.10 This report provides the recommendations made as a result of each district and borough meeting, and then draws together all proposed divisions across the whole of the County as a collective response by the Council. In addition, the report will be accompanied by the detail from the Consultation and Research Team which provides the analysis of the work undertaken and the forecast model used to evidence the recommendations made.

Dorset: Context

- 2.1 Dorset is a predominantly rural two tier authority which has four district and two borough councils within its boundary. The County is also closely aligned with the unitary authorities of Bournemouth Borough Council and the Borough of Poole which together make up the Dorset conurbation.

People Dorset's population grew by 5.7% over the decade to 2013 and is now almost 415,000. The total population grew faster than had previously been expected, rising by approximately 22,000 to 412,900 in 2011 and rising to 414,900 in 2012. Dorset has an above average proportion of residents aged 65 years or more. In-migration continues to drive population growth, with the greatest gains among 45-64 year old migrants. However, there is a net migration loss of those aged 16-24 years.

The total population is expected to increase by 4.6% by 2020. During this period an additional 9,300 dwellings are expected to be completed which will result in the total population increasing by almost 20,000. By 2020 the total population is forecast to reach 434,400 and the electorate (those aged 17+ years) will reach 358,900.

Environment Dorset includes part of England's only natural World Heritage Site and two Areas of Outstanding Natural Beauty, covering 53% of the County. The 'environmental economy' of the South West (agriculture, forestry, fishing, energy and tourism) has been estimated to contribute 15% to regional GDP and over 12% of the regional economy is estimated to rely directly on the land and landscape.

Housing 59% of Dorset's population live in urban areas and 41% in rural areas. In 2011, Dorset had about 180,200 households and this is expected to grow to around 195,000 by 2021. However over the last ten years, build rates have declined. Between 2001 and 2011 in Dorset, 70% of new and converted dwellings were built on previously developed land.

Access Almost half of those living in rural areas live in rural towns or fringe areas. Only 15.5% of households in Dorset do not have access to a car, and over 41% have access to more than one car.

Executive Advisory Panel Arrangements

- 3.1 The Executive Advisory Panel met on 10 September 2014 to consider the holistic impact of the review of boundaries in Dorset. Members took time to understand the forecasting model and the contributory factors which have to be taken in to account when forecasting (see section 4 below). In applying the same criteria across the County it was recognised that it was important to take into account any locality issues that would influence the boundaries of the future divisions.
- 3.2 Members were aware that following advice received from the Boundary Commission through an LGA workshop session, it was best to be as realistic as possible in relation to the forecasted figures and if necessary to be conservative with the numbers as over ambitious figures could mean that the final picture would be distorted and a balance was therefore needed when considering the forecast model.
- 3.3 Following the recommendation on future council size by the County Council to the Boundary Commission, it was clarified that the initial interpretation by the Panel of

the increase from 45 to 46 members had indicated an increase in the Christchurch area. However, on consideration of the data, officers confirmed that the Christchurch area did not require an increase and that this would be realised in North Dorset. This was made clear at the relevant district/borough meetings and a comparison of existing divisions by district/borough was provided (see section 4 below).

- 3.4 The information considered by the Panel, and shared with local members, provides detailed forecasts of the electorate at polling district, parish and ward level, which were used as the building blocks for the proposed new electoral divisions. The new divisions must meet the following criteria, as set out by the Boundary Commission:

Electoral Equality

Each of the new divisions must have an electorate which is within 10% of the average for the County as a whole, based on the forecast for 2020.

Total forecast electorate / Council size = average number of electors per division

359,000 / 46 = 7,800 (figures are rounded)

10 per cent tolerance: divisions must have an electorate of between **7,020 and 8,580**

District Ward Boundaries

Where possible the new divisions must be coterminous with the new district ward boundaries, or failing that parish boundaries. Only in exceptional circumstances will new boundaries be created, in these instances supporting evidence will be required to demonstrate why this is being proposed.

Community Identity

It is recognised that division boundaries cannot simply be lines on a map which are meaningless on the ground. In exceptional circumstances a new division may be created with an electorate outside of the 10% tolerance, if the alternatives would result in the division of a community or distinct settlement.

- 3.5 After completion of the district and borough meetings, it was requested that the County Council's proposals should be shared with district, boroughs and parishes in Dorset in order to show the consideration of the review and how the Council view had been arrived at. It would also be necessary to make it clear that the review was owned by the Boundary Commission and that the Council was only a consultee. It was felt that this would facilitate good network and liaison between councils in Dorset.

Electoral Forecast Methodology

- 4.1 The Boundary Commission state that electorate forecasts must be for the next six years (to 2020) and take account of proposed house building at a local level.
- 4.2 The forecasts used have been produced at polling district level all of the districts and boroughs except for East Dorset which was based on parish and parish ward boundaries as polling district information was not available at the time of analysis.
- 4.3 A basic cohort component model has been used:

$$\text{Base population} + \text{births} - \text{deaths} \pm \text{migration} = \text{new population}$$

- 4.4 Migration is constrained to the number of dwellings available, which includes those we expect to be completed by 2020, as set out in the District / Borough local plans. A more detailed methodology including data sources can be seen in Appendix A.

Page 6 – Local Government Boundary Commission for England: Dorset County Council – Stage 1 Consultation Response

- 4.5 Based on the recommended increase in council size to 46 the average number of electors per division should be 7,800. Given the 10 per cent tolerance allowed, divisions must therefore have between 7,020 and 8,580 electors. The figures become constrained further by the fact that County electorate divisions must not cross district / borough boundaries. In order to establish the number of divisions within each district or borough please see the table below:

Total number of electors per district or borough / 7,800 = number of divisions required.

	electors	electors/ 7,800	required number of divisions	existing number of divisions
Christchurch	41,610	5.33	5	5
East Dorset	76,090	9.76	10	10
North Dorset	60,450	7.75	8	7
Purbeck	39,500	5.06	5	5
West Dorset	86,020	11.03	11	11
Weymouth & Portland	55,200	7.08	7	7
total (DCC)	358,870	46.01	46	45

- 4.6 The information and maps provided for consideration at each meeting presented initial proposals to achieve electoral equality, within the 10% tolerance of the average electorate so that they met the Boundary Commission's criteria. Where it was not possible to meet the first criteria of electoral equality, members were prompted to identify sufficient evidence on the community identities and impact of the decision to warrant moving away from the mathematical model.

District and Borough County Council Members Consultation

- 5.1 An interactive presentation was used to illustrate the initial proposals of how to meet electoral equality across Christchurch, North Dorset, Purbeck, West Dorset and Weymouth and Portland based on polling districts as the building blocks for divisions. In relation to East Dorset the proposals were based on parish and parish ward boundaries as polling district information was not available at the time of analysis.
- 5.2 Each of the separate sessions had access to the detailed breakdown by parish of each division and was supported by 'before and after' maps to illustrate the proposed changes. The interactive demonstration enabled alterations to be made to divisions to facilitate discussions and to illustrate suggested changes and the wider impacts on electoral equality.

Christchurch

- 5.3 The Panel met on 25 September 2014 to consider proposals in relation to the Christchurch area. Although the preliminary recommendation from the Council was to increase from 45 to 46 with an additional seat in Christchurch, analysis work had been undertaken across the whole of Dorset and it was necessary to increase the number of divisions in North Dorset instead of Christchurch.
- 5.4 The following issues were raised by the Panel and local members:

- It was explained that there had been some concerns in relation to the initial proposal within the report due to the issue of local identity and impact on local communities and an alternative was tabled by the members from Christchurch which sought to make minimal changes to the existing boundaries with as little disruption as possible.

Page 7 – Local Government Boundary Commission for England: Dorset County Council – Stage 1 Consultation Response

- The revised proposal retained five separate electoral divisions as detailed in Appendix 1 to these minutes. Officers indicated that the numbers in relation to electoral equality would need to be investigated.

(Note: Following the meeting it was confirmed that electoral equality was achieved as a result of the tabled proposal based on the forecast 2020 electorate.)

- The Panel agreed that it was not possible to achieve electoral equality, with minimal changes, without splitting one polling district (MFA). Although it was advised that polling districts should not be split wherever possible, the result of the split would cause the least disruption and lowest impact to the local communities.
- It was highlighted that it was necessary to recognise that combining Burton and Hurn was not an effective solution due to the very different communities involved and that the River Avon was a natural divide between the two communities. It was clarified that as long as the numbers worked, the local impact on the communities could be hopefully be minimised.
- Members expressed their thanks to the County Council Member for Burton Grange, as a member of the Panel, for his hard work in exploring options for the Christchurch area.

5.5 The Panel reached unanimous agreement that the electoral divisions, as amended, provided a positive and sound basis to progress towards proposals to be considered by the Cabinet and County Council. The proposals are shown at Appendix 1 of this report.

East Dorset

5.6 The Panel met on 25 September 2014 to consider proposals in relation to the East Dorset area. The following issues were raised by the Panel and local members:

- It was explained that the Chairman of the Panel had considered the initial proposals and had made an alternative proposal for divisions across East Dorset. The revised proposal was used as a basis to facilitate the discussion with local members. It was recognised that the revised proposal joined electoral divisions H and C to form a dual member division based on the need to adequately represent the urban and rural areas within the local area of the existing West Moors and Holt and St. Leonards and St. Ives divisions.
- The County Council Member for West Moors and Holt explained that locally there was a community view within Holt, which was shared by the parish council that the area should not be connected with the conurbation as the communities did not share common interests, and would prefer to be a rural parish rather than urban. It was noted that the proposed division G would meet the lower end of the tolerance for electoral equality following development of 855 houses by 2020.
- The County Council Member for St. Leonards and St. Ives highlighted the strong historical links between Three Legged Cross and West Moors, together with social, industrial and recreational commonalities, and specifically sharing the local schooling pyramid.
- In relation to the existing Verwood and Three Legged Cross electoral division, one of the members for the dual division (Toni Coombs) highlighted the importance of including the Horton East parish boundary with the electoral division containing Verwood due to the close community links and that the recent community governance review of East Dorset District Council would see the parish joined with Verwood. It was therefore agreed that the boundary should be included with division D.

Page 8 – Local Government Boundary Commission for England: Dorset County Council – Stage 1 Consultation Response

- She also commended the retention of the whole of the Three Legged Cross area, although this would no longer share a division with Verwood. However, Verwood and Three Legged Cross had a single Town Council which could have concerns regarding the proposed change.
- During the discussion it was suggested that an alternative mixture of parish boundaries be used to comprise the division for the Verwood area, which removed Alderholt and Cranborne, and added the Woodlands locality. It was felt that this arrangement would provide better and more cohesive community links with the majority of the population on the eastern side of the division, maintain historical links, and it would enable the former Cranborne Chase electoral division to retain Cranborne within it at G. It was further clarified that although Woodlands stretched across quite a distance from East to West the majority of the electorate were in the village of Woodlands which was in the East of the parish and looked to Verwood for its services. The Horton East boundary also remained in the revised division proposal.
- The County Council Member for Ferndown felt that the changes to the electoral division serving the Ferndown area, as a current dual member division, appeared to be reasonably compact, but would take on the schools in the area which were currently cited within the Stapehill area of the neighbouring division. However, he also recognised the removal of the Longham area of the existing Ferndown division, but acknowledged the need to achieve electoral equality.
- The County Council Member for Colehill and Stapehill expressed concerns in relation to the remodelling of the electoral divisions which served the wider area of Wimborne, Colehill, Stapehill and Ferndown. She felt that the addition of the Longham area within division E was not appropriate as it was better placed with B serving the Ferndown area; that the schools near Ferndown should remain within the Stapehill area of the current Colehill and Stapehill division; and that the Colehill West parish ward should not form part of the new Wimborne based electoral division as this would split a 100 year old parish. She indicated that she was fundamentally opposed to changing the current electoral division.
- She further explained that there was local objection by Colehill Parish Council in relation to changes as a result of the recent East Dorset District Council community governance review which joined part of Colehill with Wimborne. Officers explained that the work undertaken to achieve electoral equality had to take into account the approved boundaries in place for parishes and the district with a view to being as coterminous as possible across all local authorities.
- The Panel discussed the possibility of reallocating parish boundaries to amend the proposals for electoral divisions across the Wimborne, Colehill, Stapehill and Ferndown area in an attempt to reach electoral equality. However, by amending the proposed divisions it was not possible to achieve equality by retaining the status quo for the Colehill and Stapehill division due to the electorate impact on Wimborne and Ferndown. It was noted that although the consideration by the Panel to meet electoral equality would not enable the views of the County Council Member for Colehill and Stapehill to be incorporated into the proposals, the Boundary Commission consultation on the review would welcome individual views and proposals.
- Members explored the possibility of splitting the Colehill West parish ward between the two divisions serving Wimborne and Colehill, but it was noted that development of housing in the area was planned over a 15 year period, which was too long to consider for this review as it only relied upon electorate forecasts to 2020.

Page 9 – Local Government Boundary Commission for England: Dorset County Council – Stage 1 Consultation Response

- In relation to the Stapehill area, a number of options were explored, but it was apparent that making changes to the south eastern end of East Dorset would have a knock on impact on the divisions serving Wimborne and Cranborne.
- At the time of this meeting polling district boundaries were unavailable. However it was noted that when this information was made available it may be possible to consider and fine tune the proposals for East Dorset before the end of the Boundary Commission consultation on 1 December 2014.

5.7 On considering the issues raised with the local members for East Dorset, it was noted that there was a need to compromise in a number of areas in order to achieve electoral equality. On balance it was agreed that the amendments made throughout the discussion would form the basis of a proposal to be considered by the Cabinet and County Council. However, it was recognised that a minority view had been expressed in relation to proposals to alter the current Colehill and Stapehill electoral division. The proposals are shown at Appendix 2 of this report.

North Dorset

5.8 The Panel met on 11 September 2014 to consider proposals in relation to the North Dorset area.

5.9 It was noted that in order to achieve equality it would be necessary to increase the number of members in the area by one, from 7 to 8. Although the preliminary recommendation from the Council was to increase from 45 to 46 with an additional seat in Christchurch, analysis work had been undertaken across the whole of Dorset and it was necessary to increase the number of members in North Dorset instead of Christchurch due to the forecasted increase in population and electorate by 2020 in Blandford, Gillingham and Shaftesbury.

5.10 The following issues were raised by the Panel and local members:

- It was explained that within the Blandford division it was necessary to remove some of the area to reduce the electorate to an appropriate level. This had been achieved by removing the Bryantston Park area of Blandford to align with the Bryantston Parish within the Winterbourne division (detailed at Appendix 3a of these minutes). As a result there were some further changes to the western side of the Winterbourne division.
- It was noted that all changes to electoral divisions could be achieved through the use of parish boundaries, which would largely keep communities together, such as the Winterbournes.
- The suggested divisions for Blandford and Winterborne were generally accepted. However, the local member for Blackmore Vale explained that in line with the recent review of ward boundaries at North Dorset District Council it would be sensible to include Woolland and Ibberton in the Winterbourne division. Officers confirmed that this change would be manageable in terms of the electorate numbers.
- In relation to the Gillingham division, it was noted that the forecast electorate by 2020 would increase significantly. It was therefore necessary to provide the best service to the electorate by operating with a dual member division. This was where the increase of seats on the Council would be realised. Due to the electorate figures it was not possible to divide the area into rural and urban Gillingham divisions, or to separate the entire area by dividing Gillingham in half.
- It was noted that the local member for Gillingham, as a member of the Panel, had the opportunity to express views in relation to the dual member division proposal,

Page 10 – Local Government Boundary Commission for England: Dorset County Council – Stage 1 Consultation Response

but had not done so to date. It was therefore accepted that a dual member division would be the best approach to achieving electoral equality, subject to the views of the local member for Gillingham. The Chairman indicated that he would consult the member outside of the meeting.

(Note: Following the meeting the local member for Gillingham confirmed with the Chairman that he had no objection to the proposal for a dual member division in Gillingham.)

5.11 The Panel reached unanimous agreement that the electoral divisions, as amended, provided a positive and sound basis to progress towards proposals to be considered by the Cabinet and County Council. The proposals are shown at Appendix 3 of this report.

5.12 The Cabinet, at its meeting held on 22 October 2014, heard from the County Council Member from Winterborne. She suggested that a minor change be made to incorporate Woolland, Ibberton and Hinton into the division serving Blackmore Vale as they naturally looked towards Okeford Fitzpaine and the rest of the Blackmore Vale. The suggested change was agreed as it retained electoral equality and was minor in nature due to geography.

Purbeck

5.13 The Panel met on 7 October 2014 to consider proposals in relation to the Purbeck area. The following issues were raised by the Panel and local members:

- Members recognised at the beginning of the discussion that there were a number of significant changes to the electoral divisions in Purbeck in order to try to achieve electoral equality. It was noted that a further option was circulated to the Panel and local members in advance of the meeting which met electoral equality.
- Challenge was received by a number of members in relation to the boundary for the division serving Swanage. It was recognised that due to the limited scope for reduction of the division based on geography, any change to the existing division would disassociate the polling districts with Swanage, which were distinct communities with a shared cultural and social identity and were historically hallowed. Members explored a number of options to be able to achieve electoral equality in Swanage, including the possibility of splitting a polling district serving the western edge of the division. However, it was noted that retaining the existing boundary would result in the electorate reaching 11.4% above the average electorate. It was felt that although it was over the average it would be detrimental to the local area to remove any part of the polling districts within the existing boundary. It was therefore agreed that the proposal would retain the existing boundary.
- As a secondary option, if the preference of the retention of the existing boundary was not accepted by the Boundary Commission, it was noted that the split of the polling district serving Herston on the western edge of the division should be split appropriately to achieve electoral equality.
- In relation to the changes that would impact on Lytchett Matravers, Lytchett Minster and Upton, the local member raised concern with the proposal to remove Lytchett Matravers from Upton as the two parishes shared a Parish and Town Council. The Chairman clarified that the result would mean that two County Council members would potentially represent the Parish and Town Council instead of one. The local member for Lytchett informed the Panel that the public would not accept a change of this nature, and that there would be strong local objections due to the historical link between the communities.

Page 11 – Local Government Boundary Commission for England: Dorset County Council – Stage 1 Consultation Response

- Although the Panel recognised the significant challenges to the Lytchett area, it was confirmed that at the start of the exercise the Lytchett division had by far the highest electorate (+21%) and that within the area it was not possible to keep the existing highly populated settlements together and achieve electoral equality.
 - The County Council Member for Wareham recognised that the boundary for the division serving Wareham would be extended as far as Wool, and would remove Sandford from the existing division. She felt that the demography of the proposed division was not accurate as it was not coterminous with the District Council, to which the Chairman confirmed that it was not possible to align with all of the district boundaries when devising county boundaries.
 - In an earlier option for division profiling, it was noted that there had been a suggestion of a dual member division serving the Wareham and Lytchett areas, but the Panel recognised that the use of dual divisions should only be used where there was clear connectivity towards a single area rather than grouping separate communities within a boundary. It was therefore felt that it would be inappropriate to have a dual member division in Purbeck.
 - During the discussion, a number of alternative suggestions were mapped on the interactive presentation to assess if it was possible to reach electoral equality by changing the polling districts for each of the newly proposed divisions. It was noted that electoral equality could not be achieved with any of the suggestions.
 - Although the electoral division serving Purbeck Hills at B had changed considerably in the new proposals, the existing member was content with the proposal following a number of suggestions which would prevent electoral equality being reached.
 - The County Council Member for Egdon Heath reserved judgement of the proposed changes to the electoral division at E due to the potential impact on the parishes involved, especially at East Knighton including areas to the south, and Wool which would be absorbed into division B serving Purbeck Hills. He indicated that he would speak to the parishes within the existing electoral division to gauge the level of support or objection.
 - Other members also indicated that they would speak to the parish councils within their divisions to let them know about the proposed submission from the County Council, in order to gauge support or objection. However, it was explained by the Chairman that it was not the Council's decision and that it would be for the Boundary Commission to make recommendations on the future boundaries, which could differ from the proposals submitted by the Council.
 - It was noted that members and the public would have the opportunity to respond to the initial consultation by the Boundary Commission due to end on 1 December 2014, and a further consultation would take place on the final recommendations in 2015.
 - It was also noted that the naming of divisions would be addressed at the later stage of the boundary review when recommendations had been included within the boundary commission consultation on the final boundaries.
- 5.14 The Panel reached agreement that the electoral division provided a balanced basis to progress towards proposals to be considered by the Cabinet and County Council. The proposals are shown at Appendix 4 of this report.

West Dorset

5.15 The Panel met on 7 October 2014 to consider proposals in relation to the West Dorset area. The following issues were raised by the Panel and local members:

- A number of members welcomed the principles of the further option circulated after publication of the agenda, subject to consideration of a few alterations to the proposed divisions for West Dorset. The Chairman qualified the consideration by reiterating the importance of achieving electoral equality. The Boundary Commission would then be more likely to take the Council's submission into consideration.
- The County Council Member for Chickerell and Chesil Bank was surprised that the division serving Chickerell did not contain more electors due to the future planned building of over 1000 homes within the division. It was explained that the forecast had to take a modest account of dwellings and building development by 2020, which would include consideration of local plans, but it was important that the projections were not over ambitious and reflected more accurately the number of dwellings that would be habitable.
- The County Council Member for Linden Lea confirmed that the electorate across the County appeared to be robust in the revised proposals. However, he highlighted that areas within the new division serving the immediate south of Dorchester tended to look more towards Bridport and Weymouth. He indicated that he was content with the proposal as it aligned with geography, transport, communication links and history.
- One of the County Council Members for Dorchester confirmed that he was content with the Dorchester division, which had not changed from the existing division in the new proposal.
- The County Council Member for Sherborne Rural suggested that in relation to the proposed division G, the Up Cerne area should be passed back to division F as the area would need to be served by two County Councillors across the Cerne Valley Parish Council of which Up Cerne was one of four parishes already in division F.
- The County Council Member for Beaminster asked that the polling district serving Poorton and Powerstock be moved into division I from division J. She also suggested that Rampisham and Wraxall be changed from I to J as they were closely aligned with Chelborough and Corscombe. However, in realigning parishes to reflect community identities, she made a further suggestion to retain Pilsdon within division J instead of D.
- The County Council Member for Chickerell and Chesil Bank felt that Puncknowle and West Bexington would better align with I rather than B and, on consideration of the impact on the electorate, the County Council Member for Linden Lea highlighted that Martinstown would be better placed in division B instead of E.
- Following the number of amendments to the proposed divisions, officer confirmed that the revised proposals would achieve electoral equality. All local members were content with the revised proposal for West Dorset and appreciated the opportunity to adjust divisions through the interactive presentation, and the flexibility of building divisions from polling districts.

5.16 The Panel reached unanimous agreement that the electoral divisions, as amended, provided a positive and sound basis to progress towards proposals to be considered by the Cabinet and County Council. The proposals are shown at Appendix 5 of this report.

Weymouth and Portland

5.17 The Panel met on 7 October 2014 to consider proposals in relation to the Weymouth and Portland area. The following issues were raised by the Panel and local members:

- At the beginning of the discussion, it was clarified that all divisions within the proposal fell within the 10% tolerance for electoral equality with changes to the electoral divisions C, D and G which served the existing and Broadway, Rodwell and Westham divisions.
- The County Council Member for Westham drew attention to the dynamics of considering electoral divisions in rural areas with parishes and clear communities, but he felt that it was harder to define in a built up area. He also asked whether it was possible to arrange divisions across Weymouth and West Dorset as the Councils worked in partnership. Officers confirmed that it was not possible to cross district or borough boundaries when considering future electoral divisions. It was also confirmed by a Panel member that the Boundary Commission was primarily interested in the numbers achieving equality through the mathematical model as far as possible without splitting polling districts.
- The County Council Member for Westham suggested that there was a clear divide within the polling district at the southern end of division D. He identified a split within the polling district which he felt would better suit the division and served the communities better. It was clarified that it would only be possible to split a polling district if there was no other option, and the map presented did achieve electoral equality without splitting any polling districts.
- It was noted that all local members except for the County Council Member for Westham generally supported the proposed electoral divisions. It was clarified that the Boundary Commission would look to make proposals through consultation in 2015, and the changes would take effect from the next County Council elections in 2017.

5.18 The Panel reached unanimous agreement that the electoral divisions, provided a sound basis to progress towards proposals to be considered by the Cabinet and County Council. The proposals are shown at Appendix 6 of this report.

Conclusions

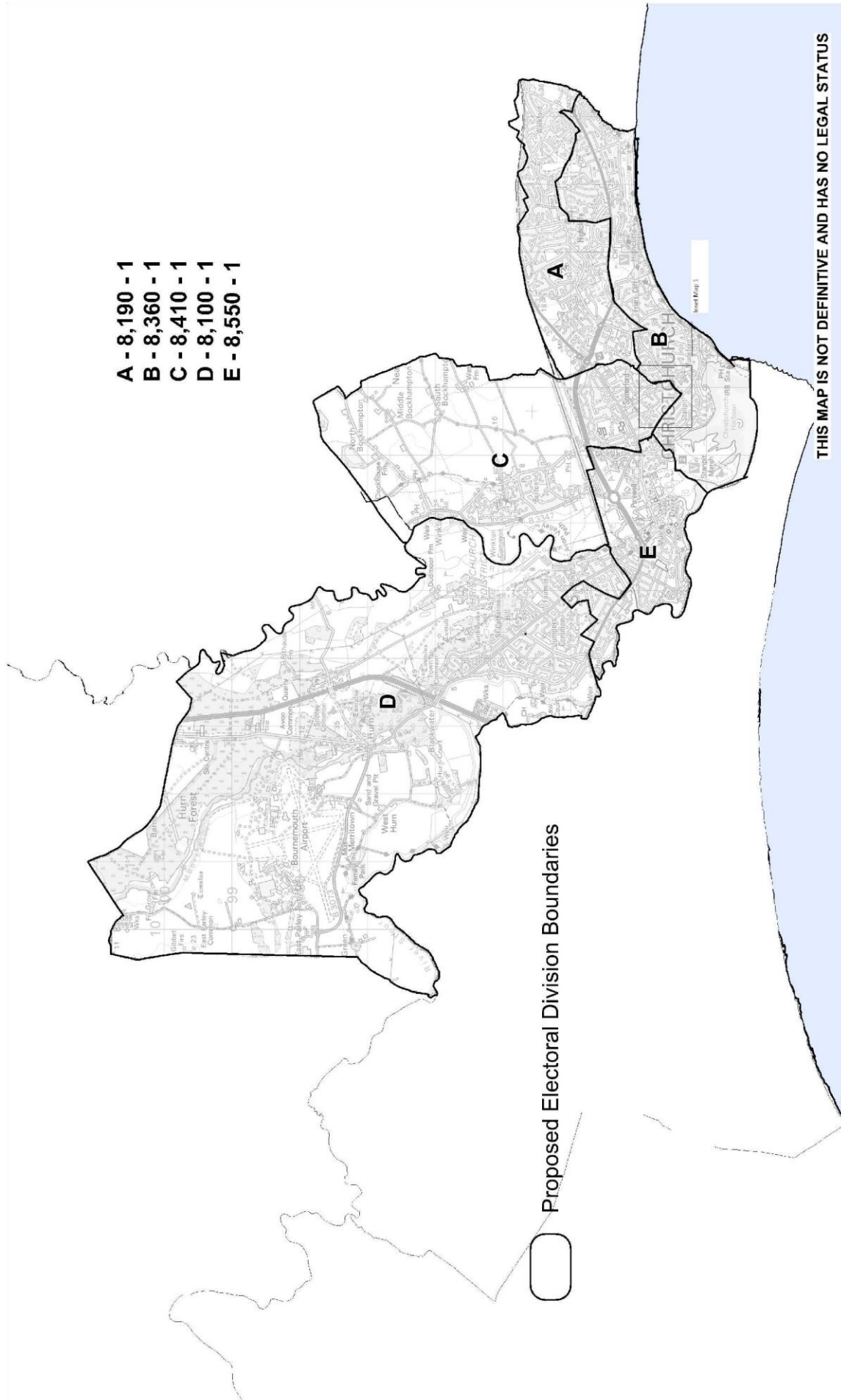
- 6.1 As a result of the consultation meetings with County Council members from the district and borough areas throughout Dorset, it is possible to recommend the electoral divisions as a result of each discussion.
- 6.2 The Panel was of the view that the consultation meetings provided a good opportunity to get involved in formulating the proposals for future electoral divisions, which met electoral equality in the majority of locations. In relation to Swanage, as the only division being proposed over the 10% tolerance for equality, at 11.4%, there was a clear judgement to retain the existing boundary based on geography, and the community impact as a result of shared cultural and social identity and historic links. The Panel made the proposal as it preferred not to split any polling districts around Swanage, but if the retention of the existing boundary was not accepted by the Boundary Commission, it was noted that the split of the polling district serving Herston on the western edge of the division should be split appropriately to achieve electoral equality.
- 6.3 Appendix 10 details the electorate figures for all of the proposed electoral divisions together with the variance in line with the 10% tolerance to achieve electoral equality.
- 6.4 In a minority of electoral divisions proposed, one in Weymouth and Portland, two in Purbeck and one in East Dorset there were comments received which did not

support the proposals by the Panel. The consultation invitation by the Boundary Commission was sent to all members on 24 September 2014 and an explanation was provided to those members that they were able to express their views to the Boundary Commission directly, but the views have also been included within this report for transparency of the member consultation undertaken by the Panel.

- 6.5 In addition to the members who did not support the proposals, two further members indicated that they wished to reserve judgement of support or objection to the proposals as they wished to speak with their constituent parish and town councils regarding the proposals. These members were also informed of the ability for them to respond to the consultation outside of this exercise, and it was also possible for the public, district, borough, parish and town councils to do the same.
- 6.6 In total 33 of 45 members (73.33%) engaged in the process and were able to express their views in relation to the local impact of the proposals. Of the engagement by members 81.81% supported the proposals, 6.06% reserved judgement and 12.12% objected to the proposals.

Recommendation

7. The view of the Council is that in light of the evidence outlined throughout this report, and the conclusions above, to approve the report as the consultation response to the first stage of the Boundary Commission's Electoral Review of Dorset consultation.



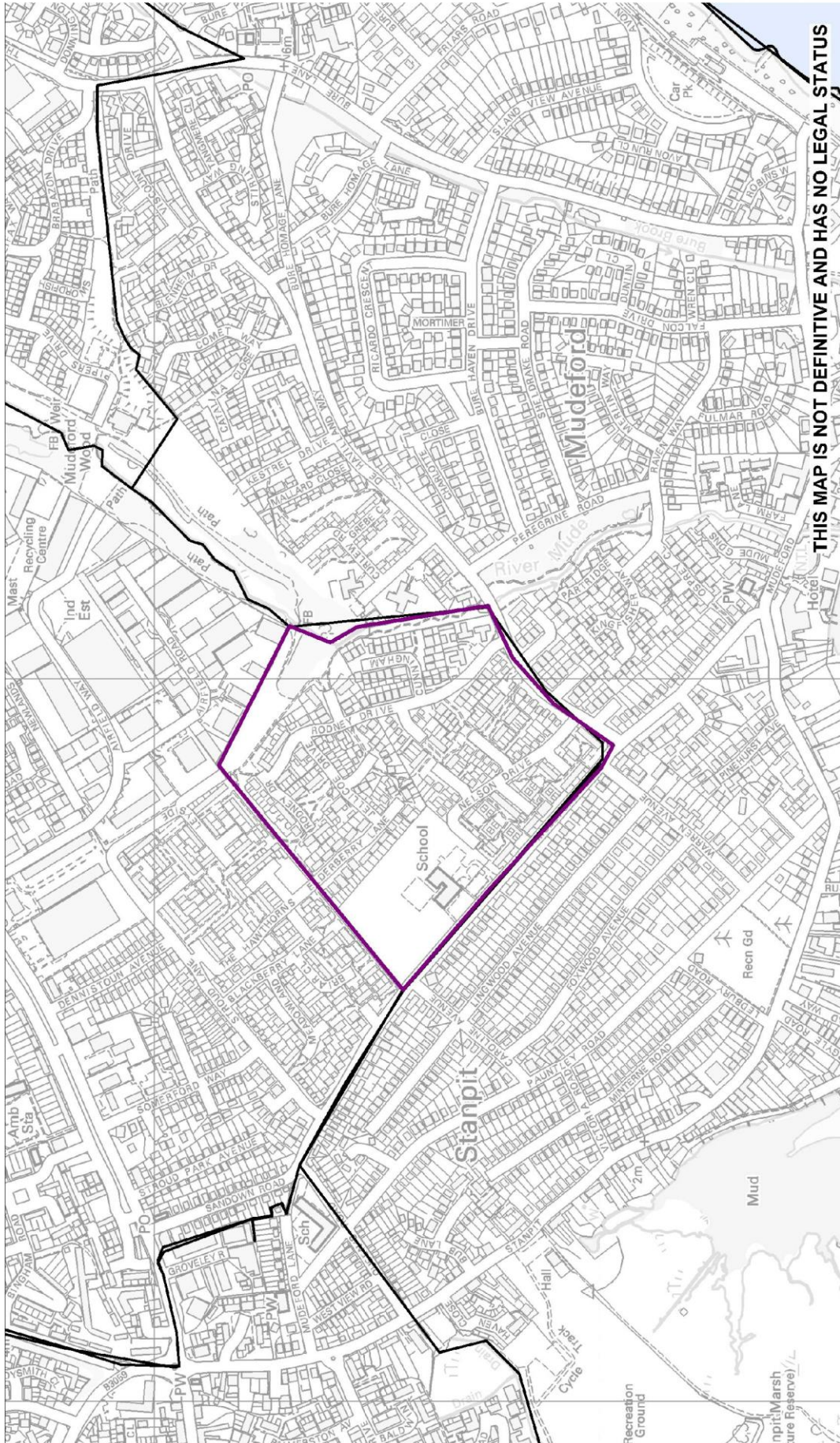
GEOGRAPHICAL INFORMATION SYSTEMS

Dorset County Council

This map is based on Ordnance Survey aerial photography in the jurisdiction of Dorset County Council. It is not a legal document. The map is for information only. It is not intended to be used for legal purposes. The map is the property of Dorset County Council. All rights reserved. © Dorset County Council 2014. Licence Number 10019190

Ref:
Date: 11/09/2014
Scale: 1:105235
Drawn By:
Cent X: 416560
Cent Y: 95656

Christchurch draft electoral boundaries - Option 6 using polling districts
 Indicating Electoral Equality



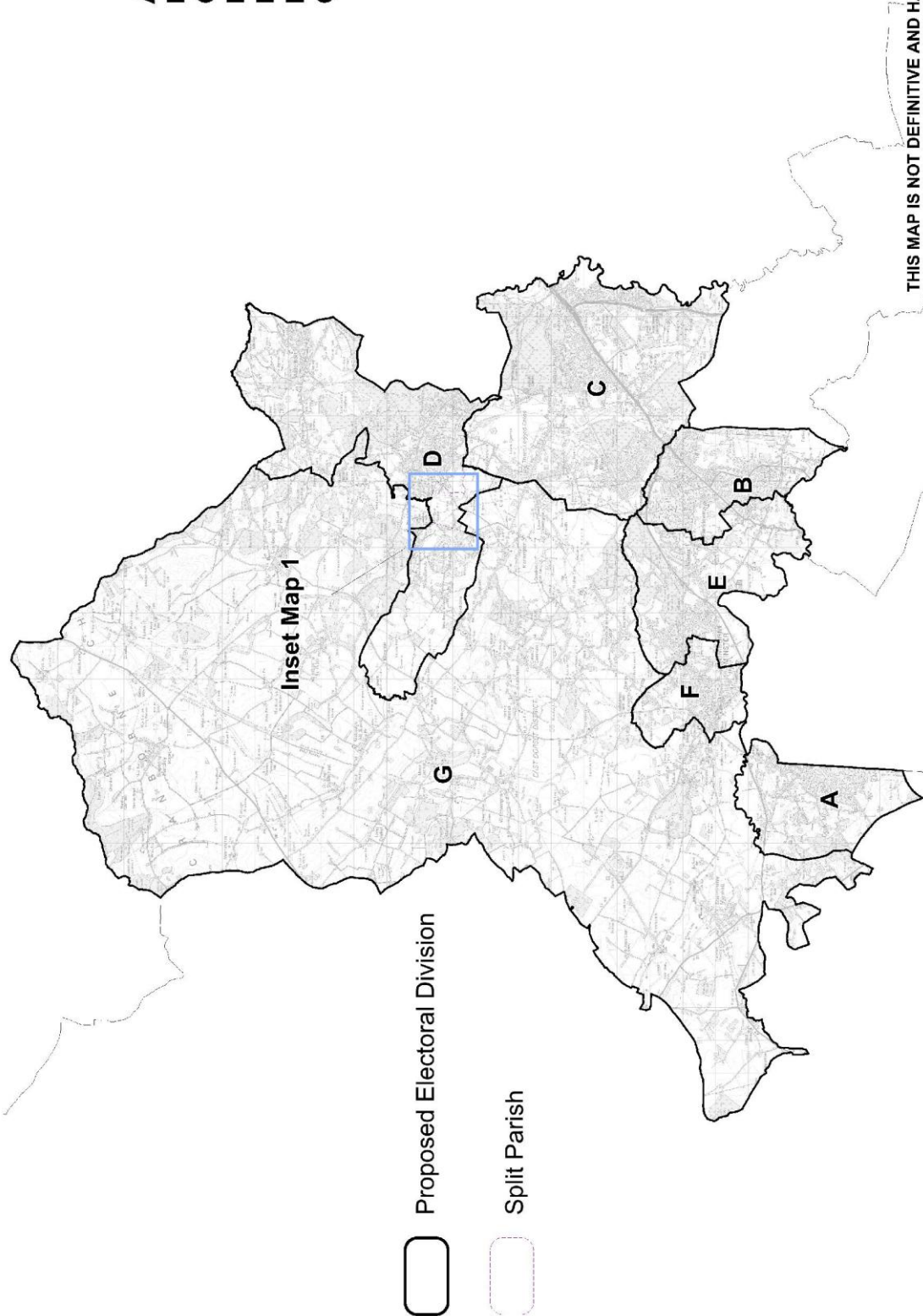
GEOGRAPHICAL INFORMATION SYSTEMS

Dorset County Council
© UK?respectives 2002 & © GaiMapping 2005 & 2009
© Crown Copyright 2014. OS Licence Number 100019780

Ref:
Date: 25/09/2014
Scale 1:18533
Drawn By:
Cent X: 417990
Cent Y: 92661

Inset Map 1

- A - 8,310 - 1
- B - 16,350 - 2
- C - 14,600 - 2
- D - 14,170 - 2
- E - 7,430 - 1
- F - 7,710 - 1
- G - 7,500 - 1



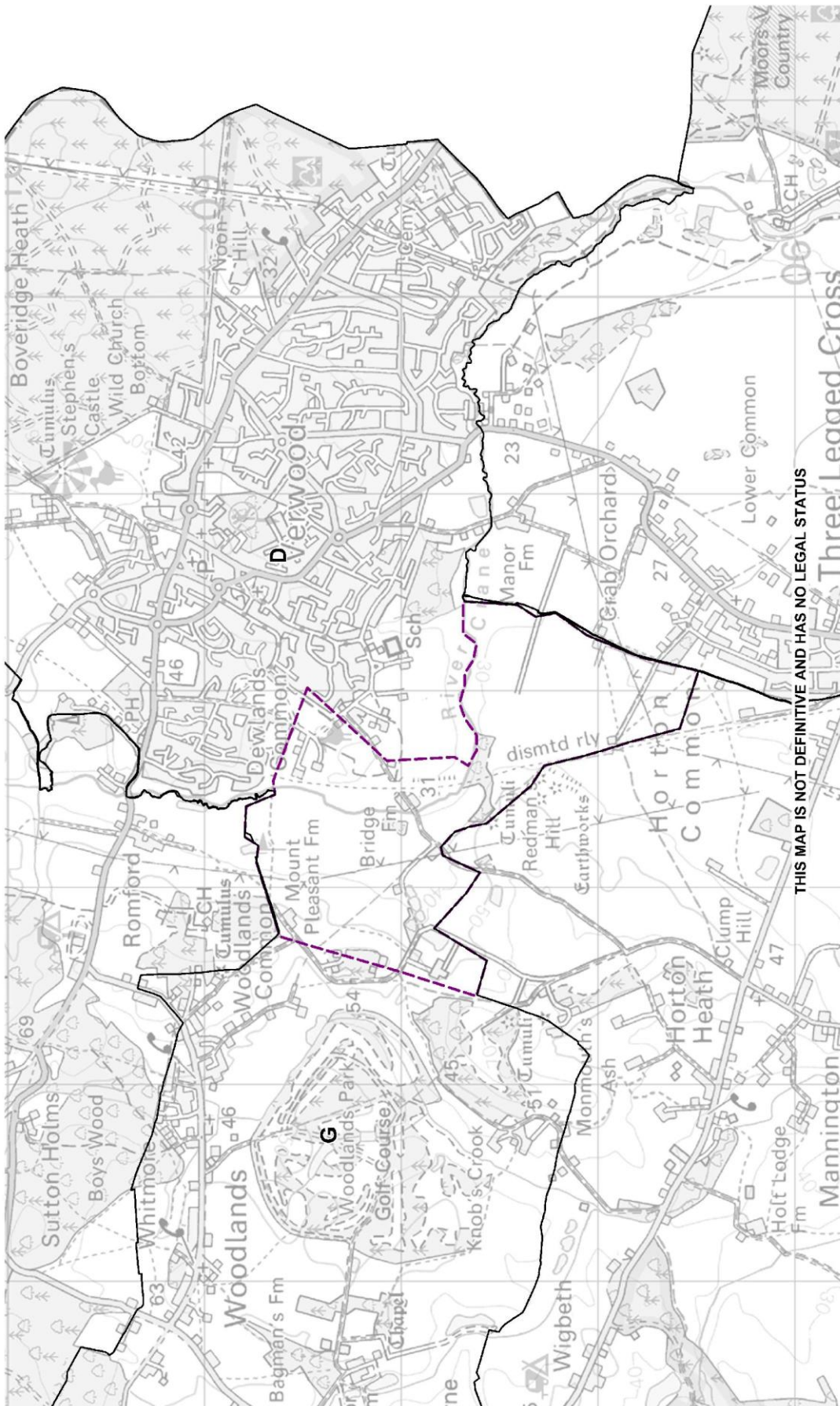
GEOGRAPHICAL INFORMATION SYSTEMS

Dorset County Council

This map has been prepared by the Local Government Boundary Commission for England on behalf of the Dorset County Council. It is intended for use as a guide only and does not constitute a contract. The Dorset County Council is not responsible for any errors or omissions. © Dorset County Council 2014. OS Licence Number: 100017070.

Ref:
 Date: 09/09/2014
 Scale 1:77067
 Drawn By:
 Cent X: 405123
 Cent Y: 104940

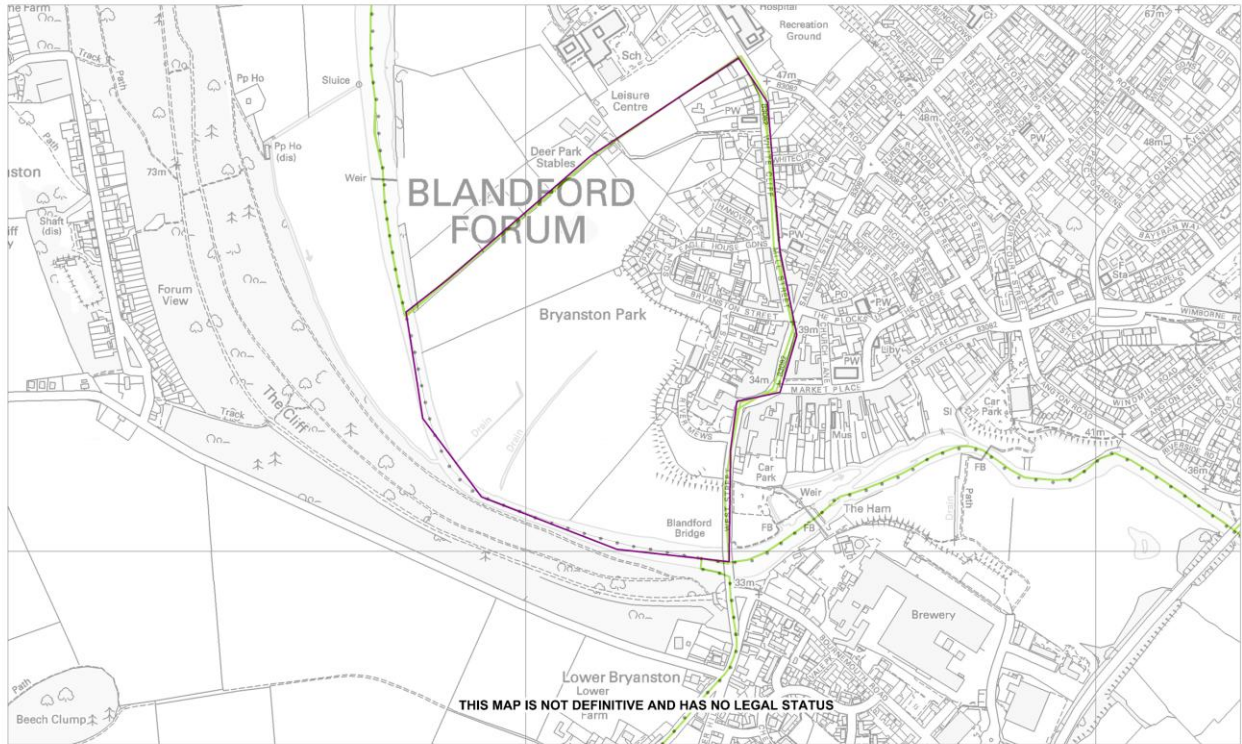
Option 4 - Post Panel East Dorset Draft Electoral Divisions 2014
 Indicating Electoral Equality



GEOGRAPHICAL INFORMATION SYSTEMS
Dorset County Council
This map is based on Ordnance Survey data. The copyright in the data is owned by the Ordnance Survey. It is reproduced here under license from the Ordnance Survey. All rights reserved. Ordnance Survey Licence No. 100019000. © Crown Copyright and Ordnance Survey 2009.

Ref:
 Date: 25/09/2014
 Scale 1:32713
 Drawn By:
 Cent X: 407606
 Cent Y: 107710

Inset Map 1 - Horton Parish Split - illustrating the move of part of Horton Parish from ED G to ED D reflecting community cohesion



THIS MAP IS NOT DEFINITIVE AND HAS NO LEGAL STATUS

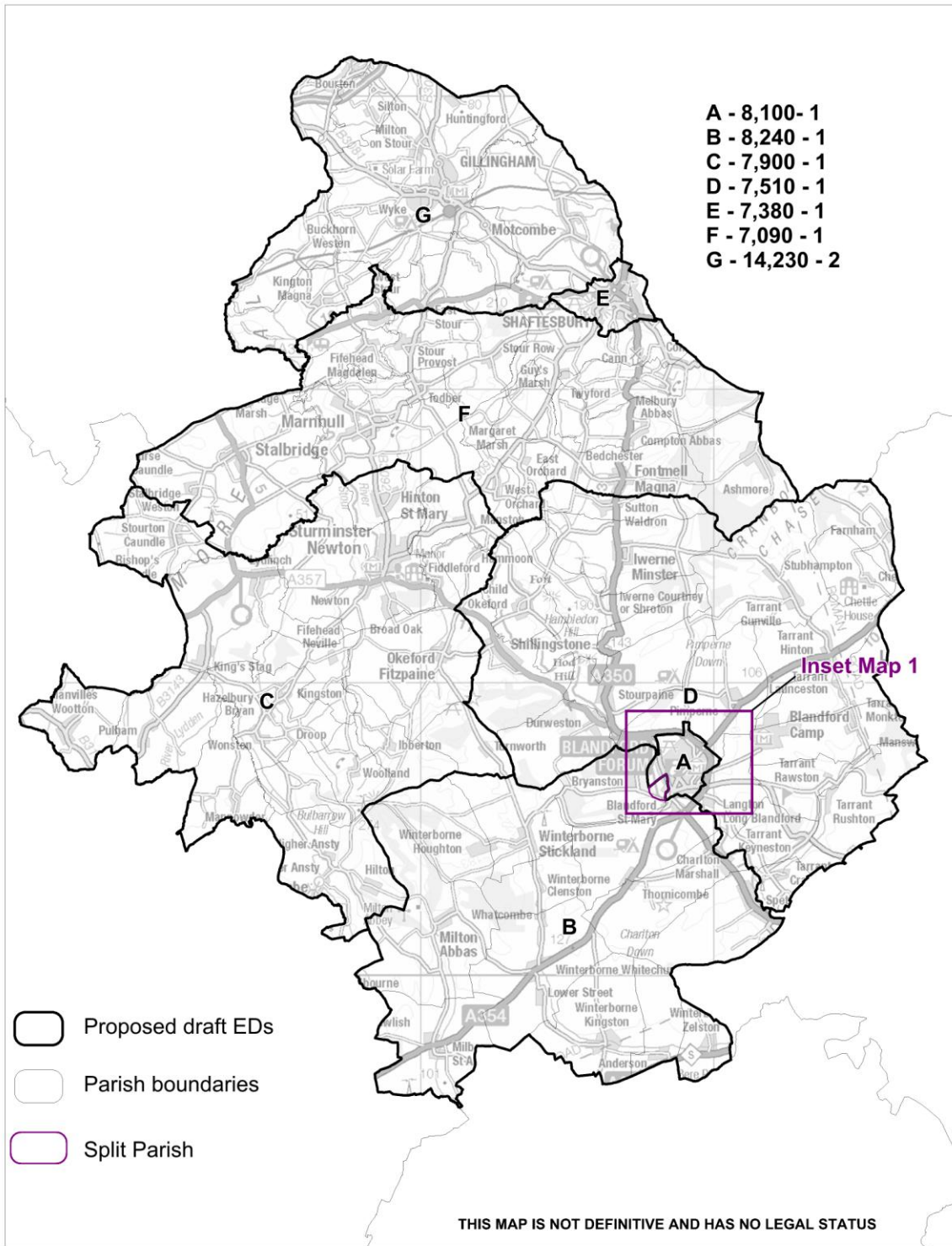
Split Parish - Inset Map 1


Ref:
Date: 09/09/2014
Scale 1:7528
Drawn By:
Cent X: 388260
Cent Y: 106393

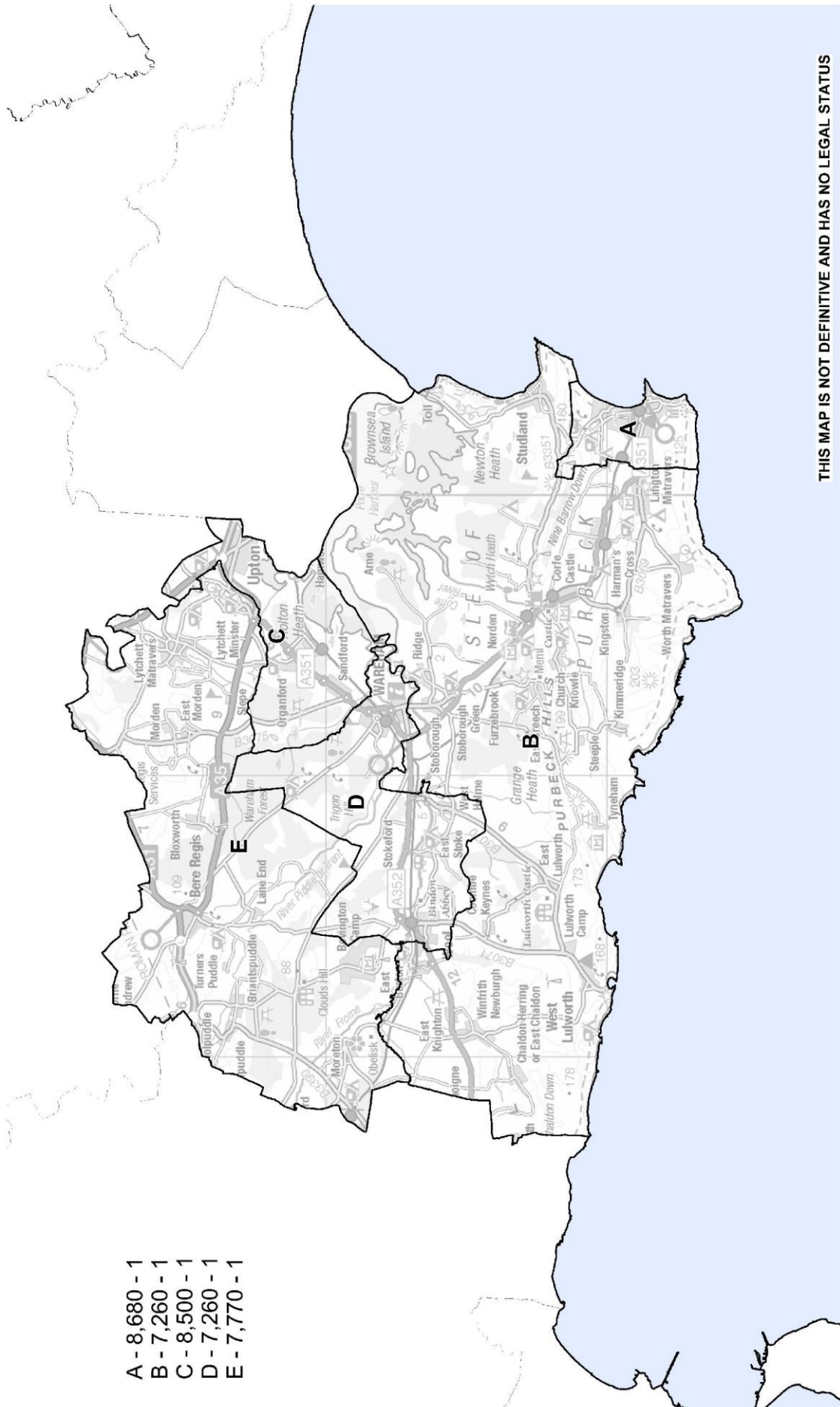
GEOGRAPHICAL INFORMATION SYSTEMS
Dorset County Council



This map is an unapproved draft and is not intended to be used for legal purposes. It is provided for information only and does not constitute a guarantee of accuracy. The Dorset County Council is not responsible for any errors or omissions. © Dorset County Council 2014. All Rights Reserved.



<p>Option 4 - North Dorset Proposed Electoral Divisions 2014</p> <p>Indicating Electoral Equality</p>	<p>Ref: Date: 23/10/2014 Scale 1:175518 Drawn By: Cent X: 382564 Cent Y: 113622</p>	<p>GEOGRAPHICAL INFORMATION SYSTEMS</p> <p> Dorset County Council</p> <p><small>This map is based upon Ordnance Survey material with the permission of the Ordnance Survey on behalf of the Controller of the Map's Stationery Office. Unauthorised reproduction infringes Crown Copyright and may lead to prosecution or civil proceedings. Aerial Photography © UK Perspectives 2002 & © Geomapping 2005 & 2009 © Crown Copyright 2014. OS Licence Number 100019795</small></p>
-------------------------------------------------------------------------------------------------------	-----------------------------------------------------------------------------------------------------------------------------------------------------------------------------------------------------	--------------------------------------------------------------------------------------------------------------------------------------------------------------------------------------------------------------------------------------------------------------------------------------------------------------------------------------------------------------------------------------------------------------------------------------------------------------------------------------------------------------------------------------------------------------------------------------------------------------------------------------



- A - 8,680 - 1
- B - 7,260 - 1
- C - 8,500 - 1
- D - 7,260 - 1
- E - 7,770 - 1

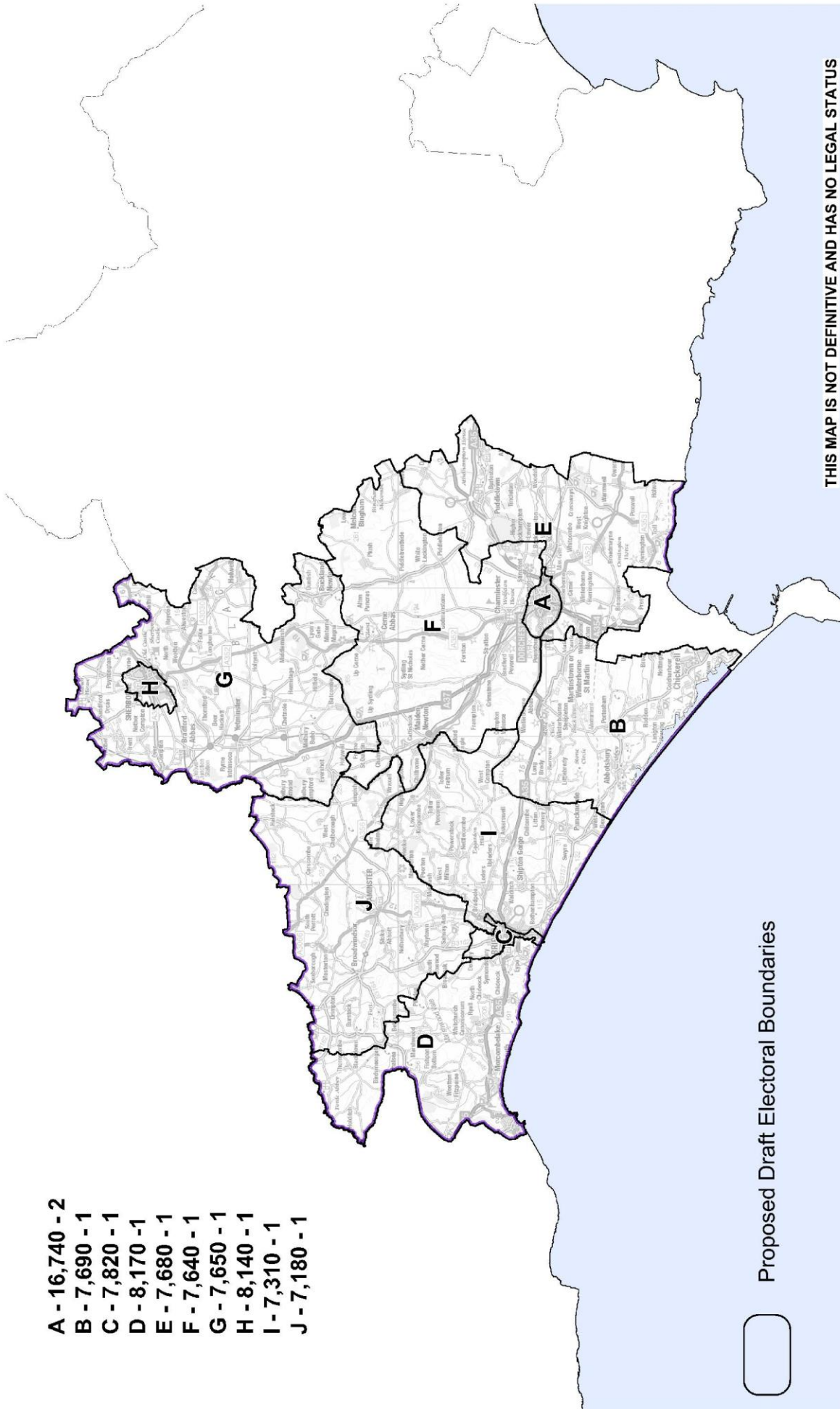
THIS MAP IS NOT DEFINITIVE AND HAS NO LEGAL STATUS

GEOGRAPHICAL INFORMATION SYSTEMS

Dorset County Council
This map is based upon Ordnance Survey data, copyright © Crown Copyright and the permission of the Ordnance Survey. It is not to be used for navigation. It is not to be used for any purpose other than that for which it was prepared. It is not to be used for any purpose other than that for which it was prepared. It is not to be used for any purpose other than that for which it was prepared.

Ref:
 Date: 08/10/2014
 Scale 1:213691
 Drawn By:
 Cent X: 393365
 Cent Y: 86651

Purbeck Draft Electoral Boundary - Option 2 - Using Polling Districts



- A - 16,740 - 2
- B - 7,690 - 1
- C - 7,820 - 1
- D - 8,170 - 1
- E - 7,680 - 1
- F - 7,640 - 1
- G - 7,650 - 1
- H - 8,140 - 1
- I - 7,310 - 1
- J - 7,180 - 1

Proposed Draft Electoral Boundaries

THIS MAP IS NOT DEFINITIVE AND HAS NO LEGAL STATUS

GEOGRAPHICAL INFORMATION SYSTEMS

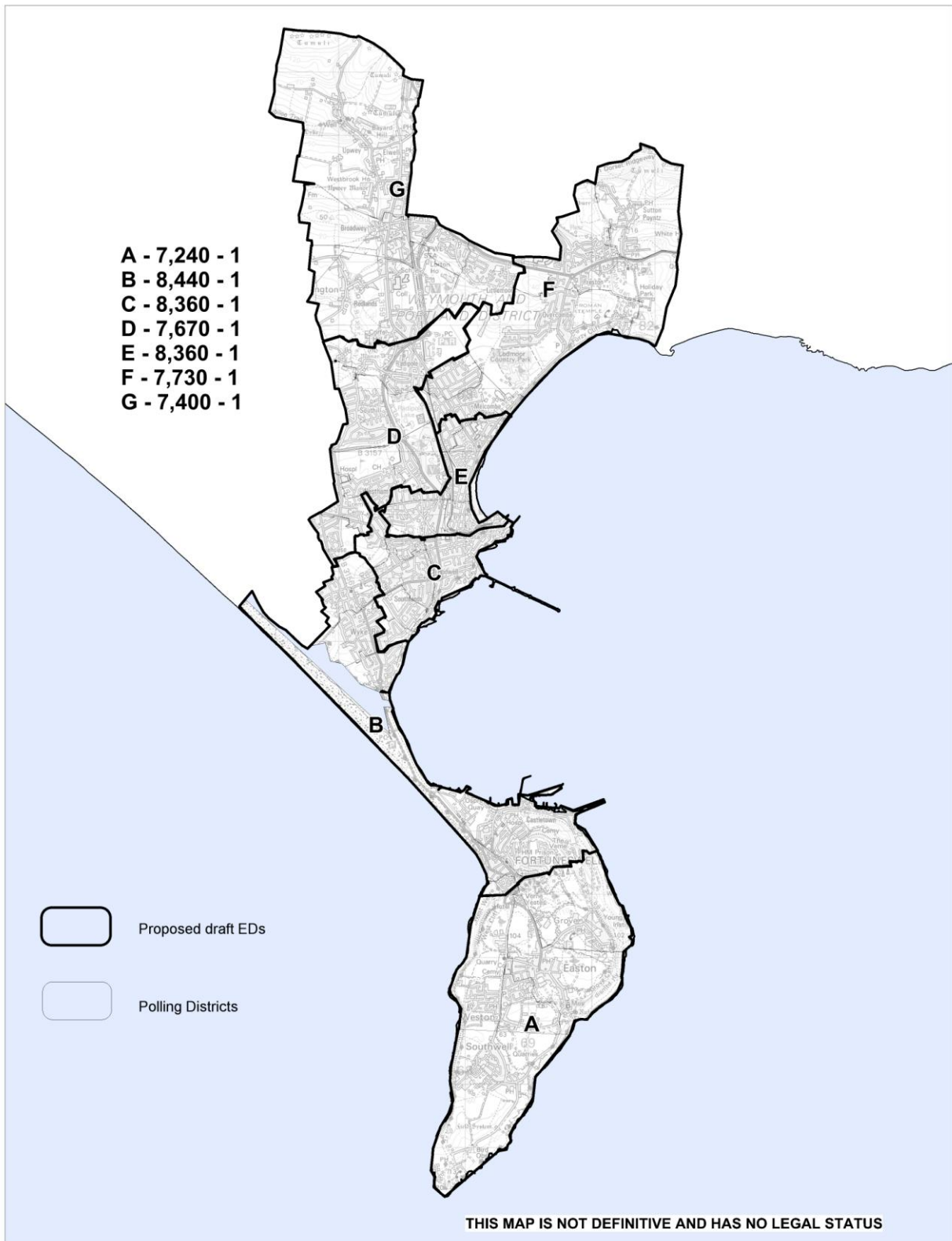
Dorset County Council

This map has been produced by the Local Government Boundary Commission for England on behalf of the Council of the County of Dorset. It is a reproduction of the map produced by the Local Government Boundary Commission for England. The map is a reproduction of the map produced by the Local Government Boundary Commission for England. The map is a reproduction of the map produced by the Local Government Boundary Commission for England.

Ref:
Date: 01/09/2014
Scale 1:229545
Drawn By:
Cent X: 366356
Cent Y: 99022

West Dorset Draft Electoral Divisions 2014 - Option 3

Indicating Electoral Equality



Weymouth & Portland draft electoral boundaries - Option 2 using Polling Districts

Ref:
Date: 08/09/2014
Scale: 1:146912
Drawn By:
Cent X: 368696
Cent Y: 78072

GEOGRAPHICAL INFORMATION SYSTEMS

Dorset County Council

This map is based upon Ordnance Survey material with the permission of the Ordnance Survey on behalf of the Controller of Her Majesty's Stationery Office. Unauthorised reproduction infringes Crown Copyright and may lead to prosecution or civil proceedings.
 Aerial Photography © Crown Copyright 2002 & © Geomatics 2005 & 2009
 © Crown Copyright 2014. OS Licence Number 100019790

North Dorset EDs

- A - 8,100 - 1
- B - 8,400 - 1
- C - 7,740 - 1
- D - 7,510 - 1
- E - 7,380 - 1
- F - 7,090 - 1
- G - 14,230 - 1

West Dorset EDs

- A - 16,740 - 2
- B - 7,690 - 1
- C - 7,820 - 1
- D - 8,170 - 1
- E - 7,680 - 1
- F - 7,640 - 1
- G - 7,650 - 1
- H - 8,140 - 1
- I - 7,310 - 1
- J - 7,180 - 1

Weymouth & Portland EDs

- A - 7,240 - 1
- B - 8,440 - 1
- C - 8,360 - 1
- D - 7,670 - 1
- E - 8,360 - 1
- F - 7,730 - 1
- G - 7,400 - 1

Christchurch EDs

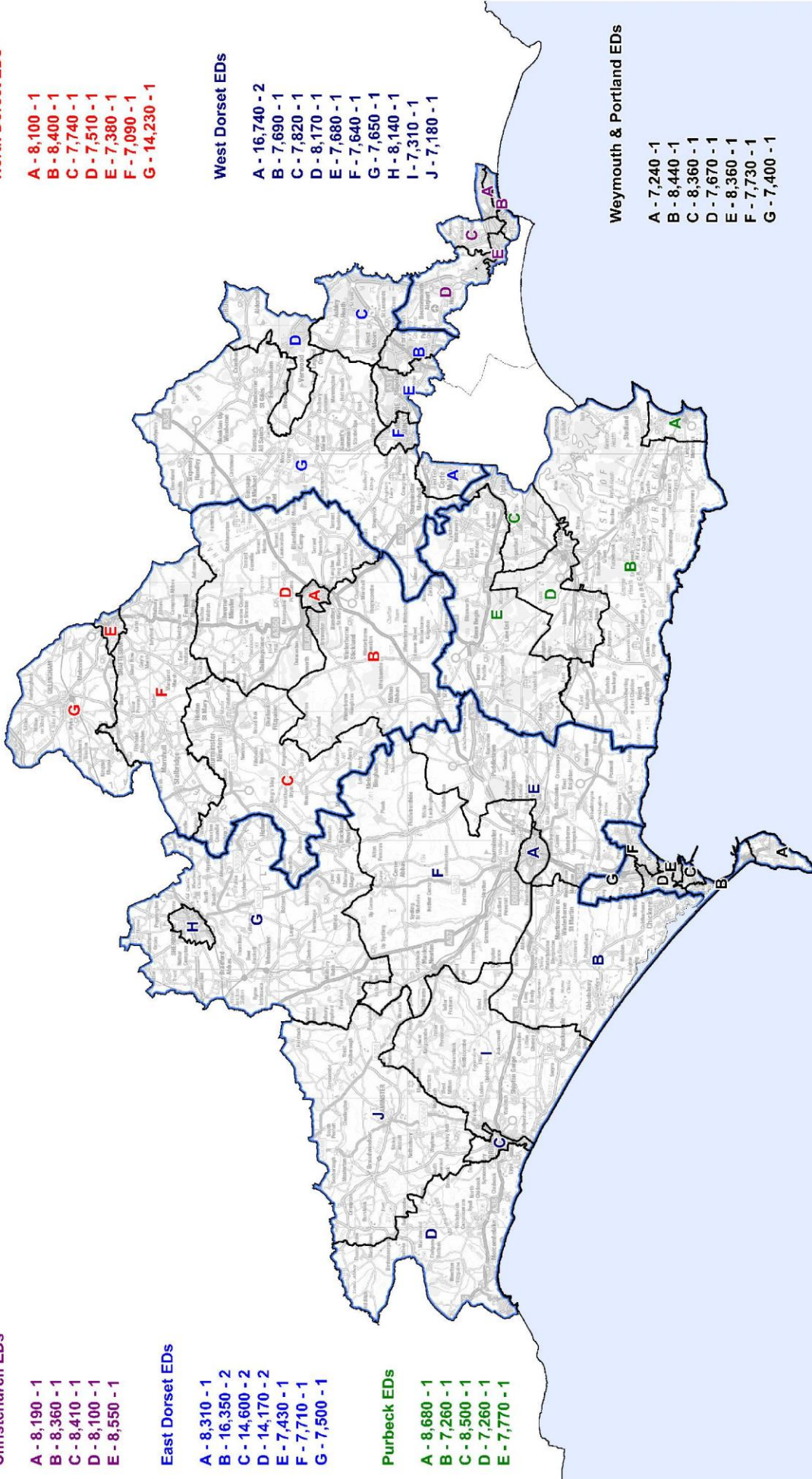
- A - 8,190 - 1
- B - 8,360 - 1
- C - 8,410 - 1
- D - 8,100 - 1
- E - 8,550 - 1

East Dorset EDs

- A - 8,310 - 1
- B - 16,350 - 2
- C - 14,600 - 2
- D - 14,170 - 2
- E - 7,430 - 1
- F - 7,710 - 1
- G - 7,500 - 1

Purbeck EDs

- A - 8,680 - 1
- B - 7,260 - 1
- C - 8,500 - 1
- D - 7,260 - 1
- E - 7,770 - 1



THIS MAP IS NOT DEFINITIVE AND HAS NO LEGAL STATUS

GEOGRAPHICAL INFORMATION SYSTEMS



Dorset County Council

The Dorset County Council logo is a registered trademark of Dorset County Council. It is used here under license. All other trademarks are the property of their respective owners. Dorset County Council is not responsible for any errors or omissions in this document. Dorset County Council is not liable for any loss or damage arising from the use of this document. Dorset County Council is not responsible for any loss or damage arising from the use of this document. Dorset County Council is not responsible for any loss or damage arising from the use of this document.

Ref:
Date: 08/10/2014
Scale 1:240249
Drawn By:
Cent X: 380256
Cent Y: 92616

Participation at County Council Member Consultation Meetings
with the Executive Advisory Panel

11 September 2014 – North Dorset

Pauline Batstone – Yes
 Andrew Cattaway – Yes
 Barrie Cooper – No
 Hilary Cox – No
 Deborah Croney – No
 Mervyn Jeffery – No
 David Walsh – Yes (Panel Member –
 support received after the meeting)

25 September 2014 – Christchurch

Lesley Dedman – Yes
 Peter Hall – Yes
 Colin Jamieson – Yes
 David Jones – Yes (Panel Member)
 Margaret Phipps – Yes

25 September 2014 – East Dorset

Steve Butler – Yes
 Robin Cook – No
 Toni Coombs – Yes
 Janet Dover – Yes
 Peter Finney – Yes
 Spencer Flower – Yes (Panel Member)
 Susan Jefferies – No
 Peter Richardson – Yes
 Ian Smith – No
 John Wilson – Yes

7 October 2014 – Purbeck

Fred Drane – Yes
 Beryl Ezzard – Yes
 Mike Lovell – Yes
 William Trite – Yes
 Peter Wharf – Yes

7 October 2014 – West Dorset

Richard Biggs – No
 Michael Bevan – Yes
 Andy Canning – Yes
 Ronald Coatsworth – Yes
 Ian Gardner – Yes
 Robert Gould – No
 Jill Haynes – Yes
 Trevor Jones – Yes
 Ros Kayes – No
 Rebecca Knox – Yes
 Daryl Turner – Yes (Panel Member)

7 October 2014 – Weymouth and Portland

Dan Brember – No
 Mike Byatt – Yes (Panel Member)
 David Harris – Yes
 Paul Kimber – Yes
 Mark Tewkesbury – No
 David Mannings – Yes
 Kate Wheeler – Yes

Participation level across the whole of Dorset 33/45 – 73.33%

Detailed methodology**Stage 1: base data:**

Base Population = 2012 Mid-year estimates by parish and ward at single year of age, Office for National Statistics (ONS).

Base electorate = number of people aged 17+ years (percentage calculated for stage 3)

Base Households (2012) = base population * household formation rates (DCLG interim household projections 2011-2021).

Base Dwellings (2012) = base households + vacancies + second/holiday homes (vacancies and second/holiday homes = % recorded in 2011 Council tax returns for parish and wards).

Stage 2: Natural Change forecast:

Provides a forecast of population change, excluding migration:

Base population (2012) + births – deaths = 2013 population

2013 population + births - deaths = 2014 population

2014 population + births - deaths = 2015 population

2015 population + births - deaths = 2016 population

2016 population + births - deaths = 2017 population

2017 population + births - deaths = 2018 population

2018 population + births - deaths = 2019 population

2019 population + births - deaths = 2020 population

Births = trend birth rates: average rate of births per 1000 population for person 2008 to 2012, at ward level. Source: Vital Statistics, ONS.

Deaths = trend death rates: average rate of deaths per 1000 population for person 2008 to 2012, at ward level. Source: Vital Statistics, ONS.

2020 households for natural change forecast population:

2020 natural change population * household formation rates (DCLG interim household projections 2011-2021).

2020 dwellings for natural change forecast population:

2020 natural change households + vacancies + second/holiday homes (vacancies and second/holiday homes = % recorded in 2011 Council tax returns for parish and wards).

2020 average household size for natural change forecast:

Natural change population (2020) / Natural change households (2020)

Stage 3: Final dwelling led population forecast

Total dwellings at 2020 = dwellings @ 2012 (as in stage 1 above) + new build 2012-2020
(based on local plan data)

Dwellings available at 2020 = total dwellings – natural change dwellings

Households available at 2020 = dwellings available - % vacancies - % second/holiday
homes

Additional population at 2020 = households available * 2020 average household size (as
above in stage 2)

Total forecast population = 2020 natural change forecast population + Additional
population at 2020

Total electorate at 2020 = total population at 2020 / 100 * % aged 17+ years (based on
2012 base population)

County ED	2020 Electorate	46 Council Members	Deviation from the average electorate (7,800)
Christchurch A	8,190	1	5.00%
Christchurch B	8,360	1	7.18%
Christchurch C	8,410	1	7.82%
Christchurch D	8,100	1	3.85%
Christchurch E	8,550	1	9.62%
East Dorset A	8,310	1	6.54%
East Dorset B	16,350	2	4.81%
East Dorset C	14,600	2	-6.41%
East Dorset D	14,170	2	-9.17%
East Dorset E	7,430	1	-4.74%
East Dorset F	7,710	1	-1.15%
East Dorset G	7,500	1	-3.85%
North Dorset A	8,100	1	3.85%
North Dorset B	8,400	1	7.69%
North Dorset C	7,740	1	-0.77%
North Dorset D	7,510	1	-3.72%
North Dorset E	7,380	1	-5.38%
North Dorset F	7,090	1	-9.10%
North Dorset G	14,230	2	-8.78%
Purbeck A	8,680	1	11.28%
Purbeck B	7,260	1	-6.92%
Purbeck C	8,500	1	8.97%
Purbeck D	7,260	1	-6.92%
Purbeck E	7,770	1	-0.38%
West Dorset A	16,740	2	7.31%
West Dorset B	7,690	1	-1.41%
West Dorset C	7,820	1	0.26%
West Dorset D	8,170	1	4.74%
West Dorset E	7,680	1	-1.54%
West Dorset F	7,640	1	-2.05%
West Dorset G	7,650	1	-1.92%
West Dorset H	8,140	1	4.36%
West Dorset I	7,310	1	-6.28%
West Dorset J	7,180	1	-7.95%
Weymouth & Portland A	7,240	1	-7.18%
Weymouth & Portland B	8,440	1	8.21%
Weymouth & Portland C	8,360	1	7.18%
Weymouth & Portland D	7,670	1	-1.67%
Weymouth & Portland E	8,360	1	7.18%
Weymouth & Portland F	7,730	1	-0.90%
Weymouth & Portland G	7,400	1	-5.13%